

ALERT BEACON SITE ASSESSMENT

Website: <https://www.alertus.com/alertbeacon>

Approved Assessments

ADACAO ELEMENTARY SCHOOL	4
AGANA- HEIGHTS ELEMENTARY SCHOOL	4
AGAT MAYOR'S OFFICE	6
AGUEDA JOHNSTON MIDDLE SCHOOL	7
ASTUMBO ELEMENTARY SCHOOL	9
ASTUMBO MIDDLE SCHOOL	12
BARRIGADA MAYOR'S OFFICE	13
B.P. CARBULLIDO ELEMENTARY SCHOOL	15
CENTRAL SUCCESS ACADEMY	16
C.L. TAITANO ELEMENTARY SCHOOL	17
CHIEF BRODIE ELEMENTARY SCHOOL	19
DEDEDO MAYOR'S OFFICE	20
D.L. PEREZ ELEMENTARY SCHOOL	21
FINEGAYAN ELEMENTARY SCHOOL	23
F.B.LEON GUERRERO MIDDLE SCHOOL	24
GEORGE WASHINGTON HIGH SCHOOL	25
GOVERNOR'S OFFICE	26
GUAM HOMELAND SECURITY / OFFICE OF CIVIL DEFENSE	28
GUAM POWER AUTHORITY	30
HARRY S. TRUMAN ELEMENTARY SCHOOL	31
INALAHAN ELEMENTARY SCHOOL	34
INALAHAN MAYOR'S OFFICE	35
INALAHAN MIDDLE SCHOOL	36
JOHN F. KENNEDY HIGH SCHOOL	37
J.M. GUERRERO ELEMENTARY SCHOOL	39
J.Q. SAN MIGUEL ELEMENTARY SCHOOL	41
JOSE L.G. RIOS MIDDLE SCHOOL	43
L.B. JOHNSON ELEMENTARY SCHOOL	44
LIGUAN ELEMENTARY SCHOOL	45
L.P. UNTALAN MIDDLE SCHOOL	47

M.A. Ulloa Elementary School	48
Machananao Elementary School	49
MANGILAO MAYOR'S OFFICE	50
MAYOR'S COUNCIL OF GUAM	50
MERIZO MAYOR'S OFFICE	52
MONGMONG-TOTO-MAITE MAYORS OFFICE	53
OCEANVIEW MIDDLE SCHOOL	55
OFFICE OF TECHNOLOGY	57
OKKODO HIGH SCHOOL	58
ORDOT-CHALAN PAGO ELEMENTARY SCHOOL	59
PITI MAYOR'S OFFICE	62
SIMON SANCHEZ HIGH SCHOOL	63
SOUTHERN HIGH SCHOOL	65
TALOFOFO MAYOR'S OFFICE	67
TAMUNING-TUMON-HARMON MAYOR'S OFFICE	68
TIYAN HIGH SCHOOL	68
UMATAC MAYOR'S OFFICE	70
UNIVERSITY OF GUAM	71
VICENTE BENAVENTE MIDDLE SCHOOL	72
YONA MAYOR'S OFFICE	73

ADACAO ELEMENTARY SCHOOL

1. Project Location Address: #340 Carnation Avenue, Mangilao, Gu. 96913
2. Latitude-Longitude : 13°29'10"N 144°50'41"E
3. Location to be Installed : Main Office Area
4. Wall - type : Concrete
Power source : Power over Ethernet (PoE) available

AC Adapter

NOTE: When using PoE, the only required connection is the data/power cable from the PoE data equipment.

- Installation Materials :
1. Wiremold double-gang surface mount box (1ea.)
 2. CAT5e Internet cable with RJ-45 connectors (100 ft.)
 3. Interior wire mouldings/coverings.(100 ft.)
 4. Rechargeable batteries (AA-6ea.)



AGANA- HEIGHTS ELEMENTARY SCHOOL

1. Project Location Address: # 350 Joseph Cruz Avenue, Agana Heights, Guam 96910

2. Latitude-Longitude : 13°27'44"N 144°44'56"E
3. Location to be installed : Main Office Area
4. Wall - type : Concrete
5. Power source : Power over Ethernet (PoE) available

AC Adapter

NOTE: When using PoE, the only required connection is the data/power cable from the PoE data equipment.

- Installation Materials :
1. Wiremold double-gang surface mount box (1ea.)
 2. CAT5e Internet cable with RJ-45 connectors (60 ft.)
 3. Interior wire mouldings/coverings.(60 ft.)
 4. Rechargeable batteries (AA-6ea.)



AGAT MAYOR'S OFFICE

1. Project Location Address: # 393 Rt-2 Agat , Guam
2. Latitude-Longitude: 13038829, 144.65935
3. Recipient Summary of where it will be installed: Main office
4. Wall type : Concrete
5. Power : Unit will need to be powered by A/C Transformer.

Installation materials: 1. (Power A/C) 18AWG, 3-conductor cable (30ft.)

Wiremold double-gang surface mount box (1ea.)

2. CAT5e Internet cable with RJ-45 connectors (45 ft.)

3. Interior wire mouldings/coverings.(45ft.)

4. Rechargeable batteries (AA-6ea.)



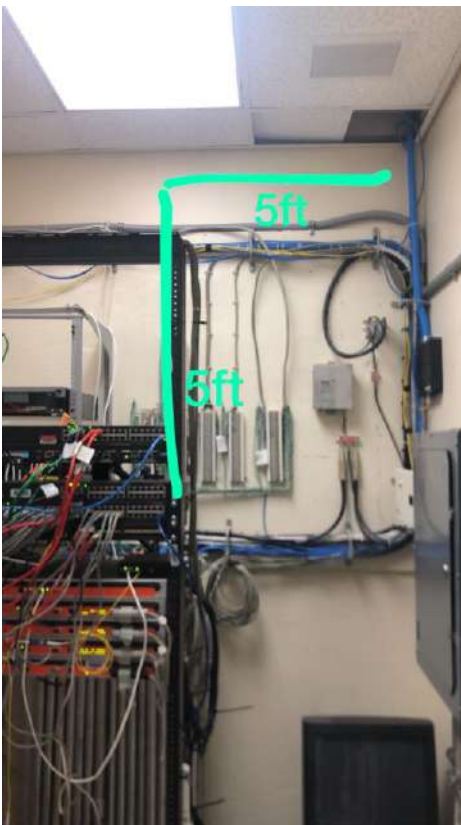
AGUEDA JOHNSTON MIDDLE SCHOOL

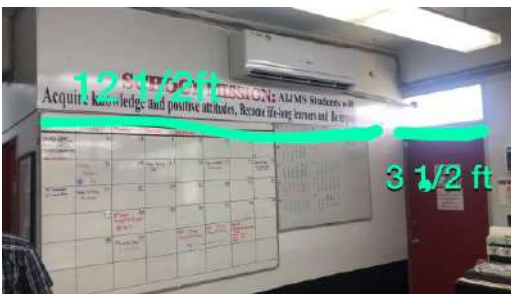
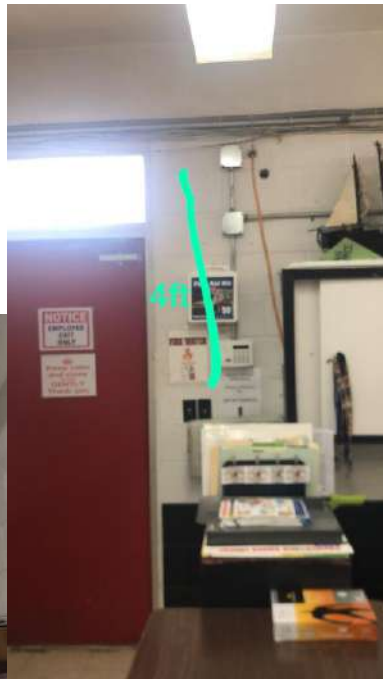
1. Project Location Address : #192 Dero Road, Ordot GU 96910
2. Latitude-Longitude : 13°26'50"N 144°45'30"E
3. Location to be installed : Main Office Area
4. Wall construction type : Concrete
5. Power source : Power over Ethernet (PoE) available

AC Adapter

NOTE: When using PoE, the only required connection is the data/power cable from the PoE data equipment.

- Installation Materials :
1. Wiremold double-gang surface mount box (1ea.)
 2. CAT5e Internet cable with RJ-45 connectors (60 ft.)
 3. Interior wire mouldings/coverings.(60 ft.)
 4. Rechargeable batteries (AA-6ea.)





ASTUMBO ELEMENTARY SCHOOL

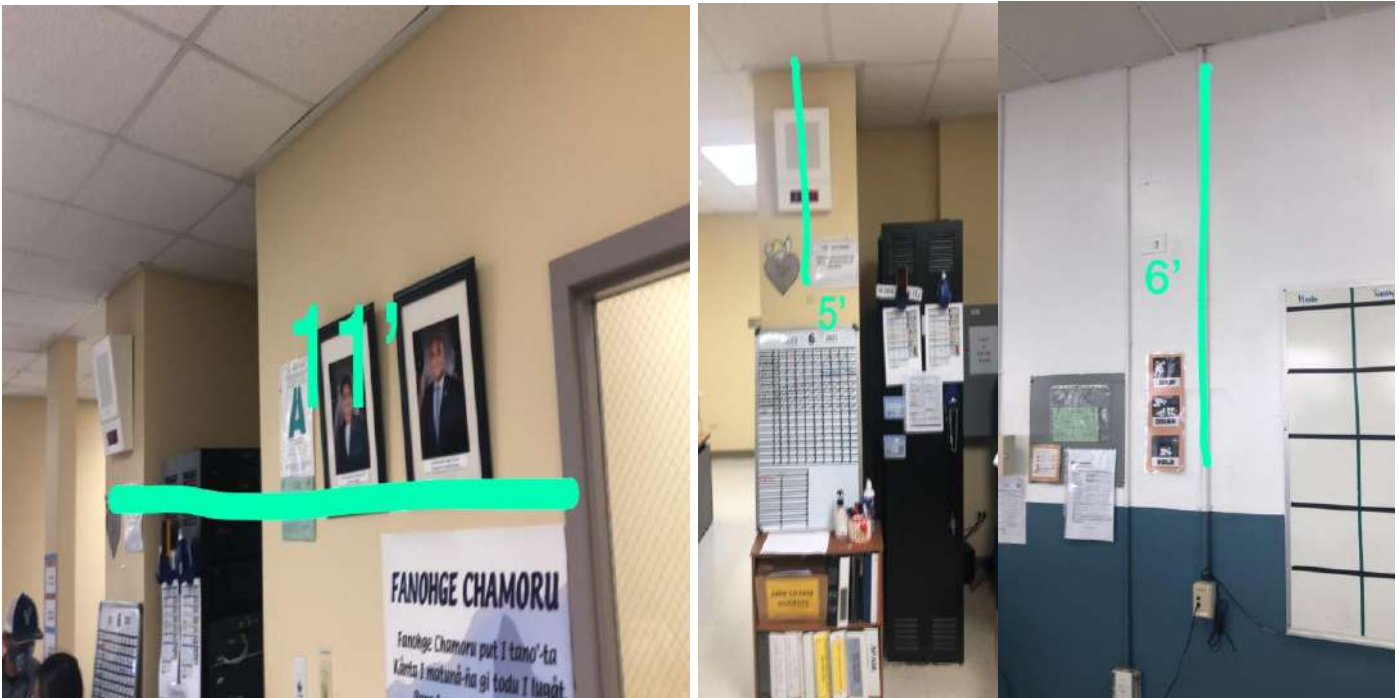
1. Project Location Address : # 225 Chalan Hachon Dededo, Guam 96929
2. Latitude-Longitude : 13°33'12"N 144°50'39"E
3. Location to be installed : Main Office Area

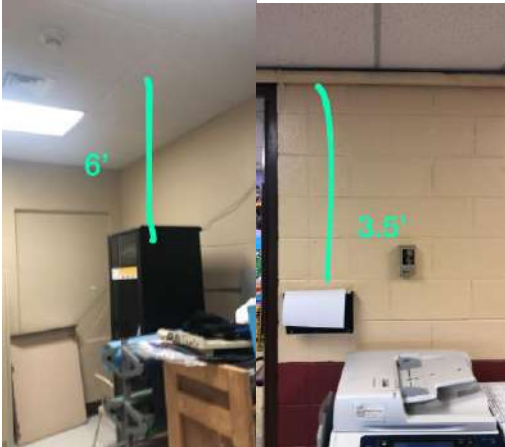
4. Wall construction type : Dry-wall
5. Power source : Power over Ethernet (PoE) available

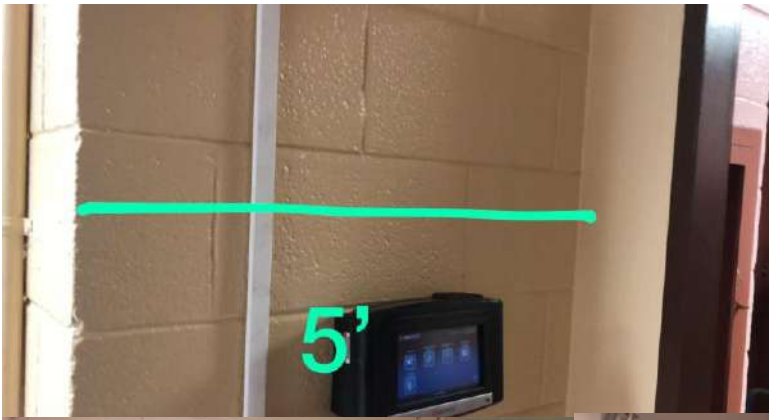
AC Adapter

NOTE: When using PoE, the only required connection is the data/power cable from the PoE data equipment.

- Installation Materials :
1. Wiremold double-gang surface mount box (1ea.)
 2. CAT5e Internet cable with RJ-45 connectors (130 ft.)
 3. Interior wire mouldings/coverings.(130 ft.)
 4. Rechargeable batteries (AA-6ea.)







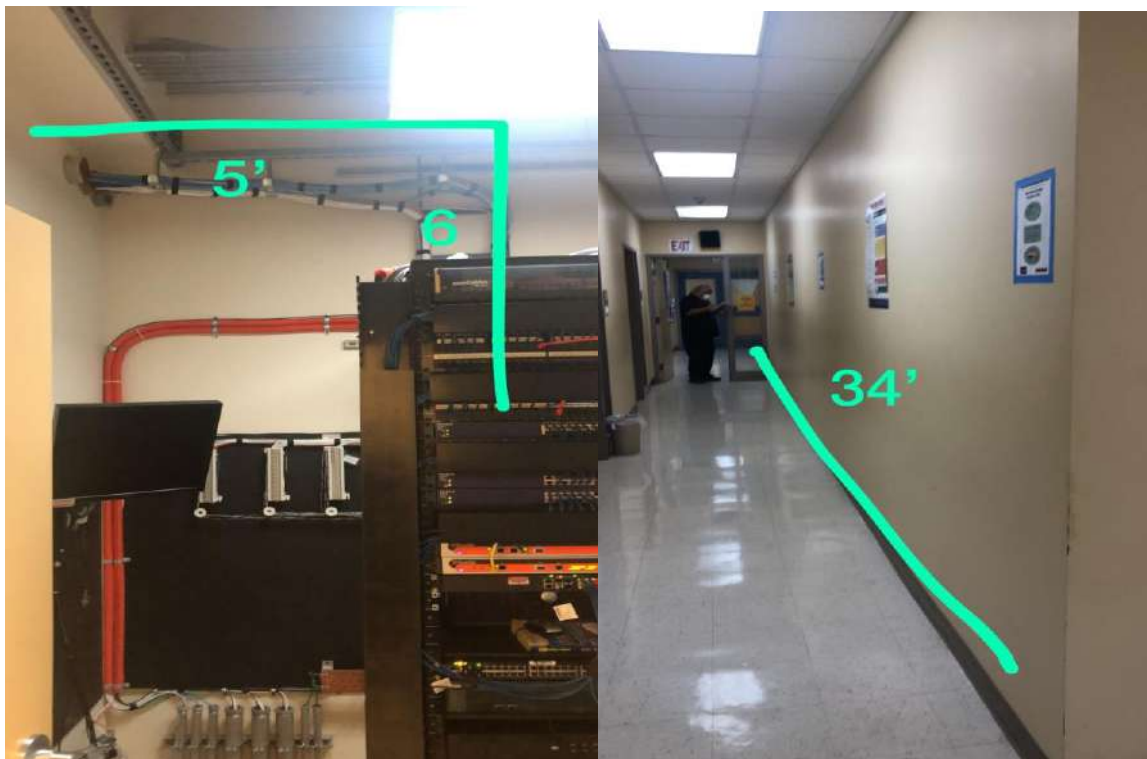
Server Room

ASTUMBO MIDDLE SCHOOL

1. Project Location Address : # 389 Chalan Hachon Dededo, Guam 96929
2. Latitude-Longitude : 13°33'02"N 144°50'48"E
3. Location to be installed : Main Office Area
4. Wall construction type : Dry-wall
5. Power source : Power over Ethernet (PoE)

NOTE: When using PoE, the only required connection is the data/power cable from the PoE data equipment.

- Installation Materials :**
1. Wiremold double-gang surface mount box (1ea.)
 2. CAT5e Internet cable with RJ-45 connectors (65 ft.)
 3. Interior wire mouldings/coverings.(65 ft.)
 4. Rechargeable batteries (AA-6ea.)



BARRIGADA MAYOR'S OFFICE

1. Project Location Address: #124 Luayao Ln. Barrigada, Guam
 2. Latitude-Longitude: 13.46961, 144.79896
 3. Location to be Installed : Main Office Area
 4. Wall type : Concrete
- Power : Unit will need to be powered by A/C Transformer and

- Installation materials:
1. (Power A/C) 18AWG, 2-conductor cable (7ft.)
 2. CAT5e Internet cable with RJ-45 connectors (2ft.)
 3. Interior wire mouldings/coverings.
 4. Rechargeable batteries (AA-6ea.)



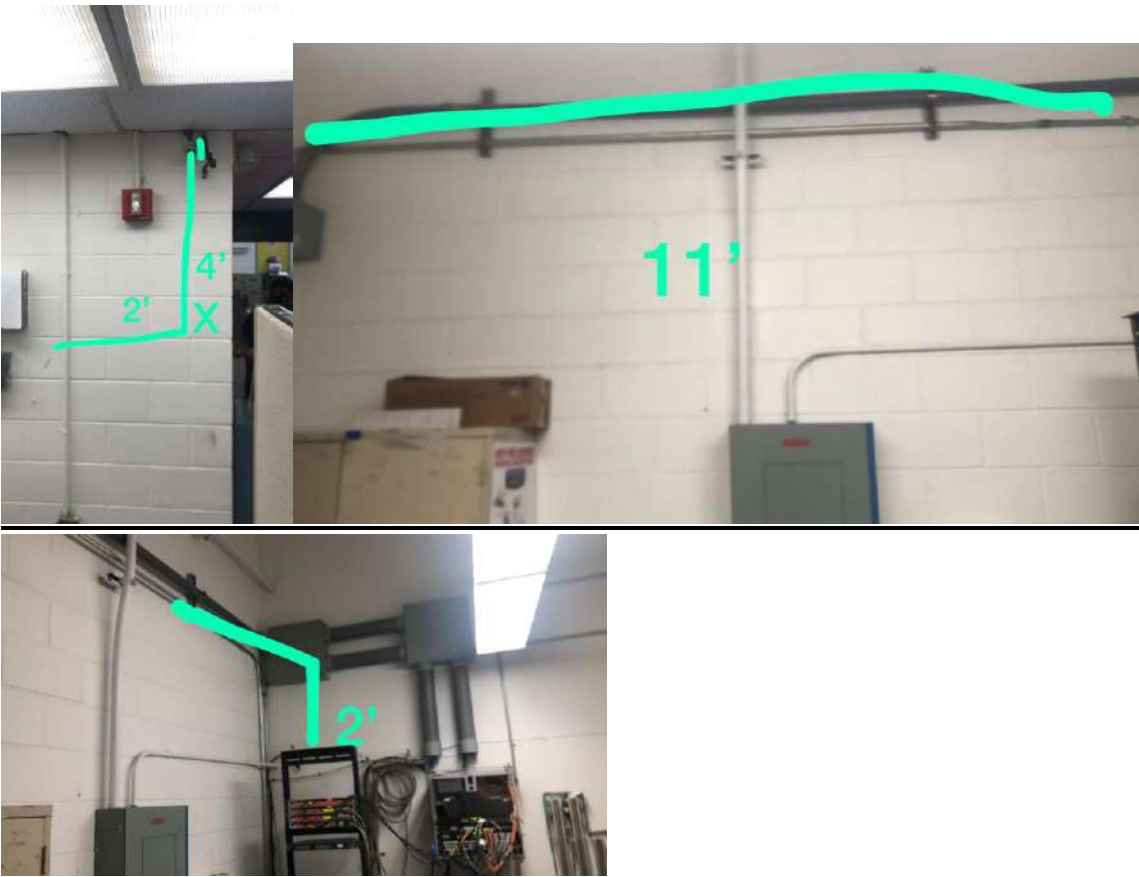


B.P. CARBULLIDO ELEMENTARY SCHOOL

1. Project Location Address : #156 Canada-Toto Road Barrigada Guam 96913
2. Latitude-Longitude : 13°28'14"N 144°47'32"E
3. Location where device is to be installed: Main Office Area
4. Wall construction type : Concrete
5. Power source : Power over Ethernet (PoE)

NOTE: When using PoE, the only required connection is the data/power cable from the PoE data equipment.

- Installation Materials :**
1. Wiremold double-gang surface mount box (1ea.)
 2. CAT5e Internet cable with RJ-45 connectors (25 ft.)
 3. Interior wire mouldings/coverings.(25 ft.)
 4. Rechargeable batteries (AA-6ea.)



CENTRAL SUCCESS ACADEMY

1. Project Location Address : # 500 Mariner Avenue Bldg. C Barrigada Guam
2. Latitude-Longitude : 13°28'40"N 144°48'09"E
3. Location to be Installed : Administration Office - 2nd floor
4. Wall construction type : Dry-wall
5. Power source : Power over Ethernet (PoE)

NOTE: When using PoE, the only required connection is the data/power cable from the PoE data equipment.

- Installation Materials :**
1. Wiremold double-gang surface mount box (1ea.)
 2. CAT5e Internet cable with RJ-45 connectors (7ft.)
 3. Interior wire mouldings/coverings.(7 ft.)
 4. Rechargeable batteries (AA-6ea.)



C.L. TAITANO ELEMENTARY SCHOOL

1. **Project Location Address: #170 Bien Venida Street, Sinajana**
2. **Latitude-Longitude : 13°27'42"N 144°45'15"E**
3. **Location where device is to be installed : Main Office Area**
4. **Wall construction type : Dry-wall**
5. **Power source : Power over Ethernet (PoE)**

NOTE: When using PoE, the only required connection is the data/power cable from the PoE data equipment.

- Installation Materials :**
1. **Wiremold double-gang surface mount box (1ea.)**
 2. **CAT5e Internet cable with RJ-45 connectors (35 ft.)**
 3. **Interior wire mouldings/coverings.(35 ft.)**
 4. **Rechargeable batteries (AA-6ea.)**

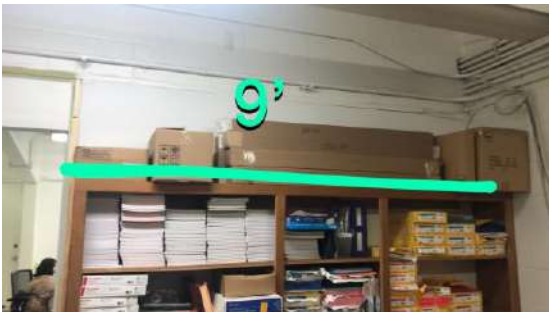


CHIEF BRODIE ELEMENTARY SCHOOL

1. Project Location Address: 170 Bien Venida St., Tamuning
2. Latitude-Longitude: 13°29'56"N 144°47'49"E
3. Location where device is to be installed: Main Office/Principal's Conference room.
4. Wall construction type : Concrete
5. Power source : Power over Ethernet (PoE)

NOTE: When using PoE, the only required connection is the data/power cable from the PoE data equipment.

- Installation Materials :**
1. Wiremold double-gang surface mount box (1ea.)
 2. CAT5e Internet cable with RJ-45 connectors (42 ft.)
 3. Interior wire mouldings/coverings.(42ft.)
 4. Rechargeable batteries (AA-6ea.)



DEDEDO MAYOR'S OFFICE

1. Project Location Address: Iglesia Circle , Dededo
2. Latitude-Longitude: 13.51734, 144.83896
3. Location to be Installed : Main Office Area
4. Wall type : Concrete

Power : Unit will need to be powered by A/C Transformer.

Installation materials: 1. (Power A/C) 18AWG, 3-conductor cable (8ft.)

Wiremold double-gang surface mount box (1ea.)

2. CAT5e Internet cable with RJ-45 connectors (9ft.)

3. Interior wire mouldings/coverings.(17ft.)

4. Rechargeable batteries (AA-6ea.)



D.L. PEREZ ELEMENTARY SCHOOL

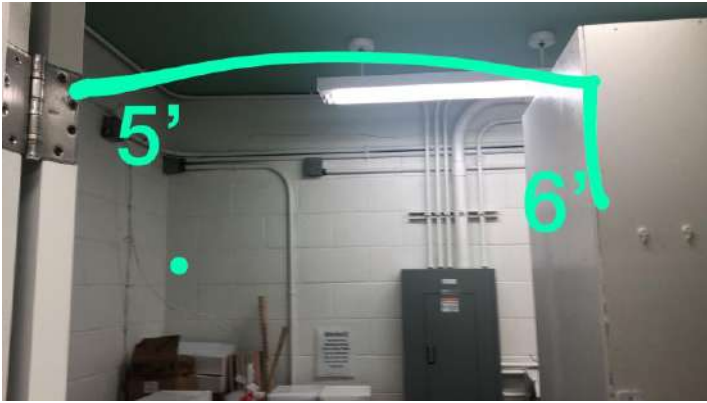
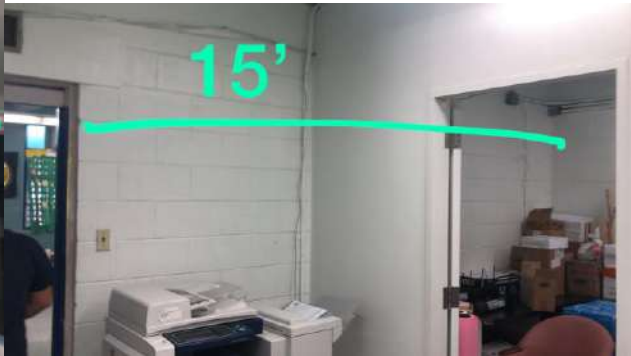
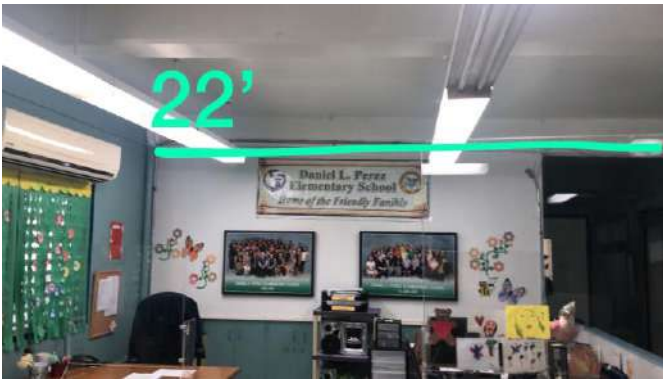
1. Project Location Address: 400 Gayinero Drive, Yigo, Guam 96929
2. Latitude-Longitude: 13°32'04"N 144°53'42"E
3. Location where device is to be installed: Main Office Area
4. Wall construction type : Concrete
5. Power source : Power over Ethernet (PoE)

NOTE: When using PoE, the only required connection is the data/power cable from the PoE data equipment.

- Installation Materials :**
1. Wiremold double-gang surface mount box (1ea.)
 2. CAT5e Internet cable with RJ-45 connectors (75+ ft.)
 3. Interior wire mouldings/coverings.(90ft.)
 4. Rechargeable batteries (AA-6ea.)



Beacon will be placed in admin office near the board. The outlet is within 5 feet of the beacon. The ethernet will be drilled through the concrete walls. Please see image reference below for measurements of ethernet cord. They are in order.



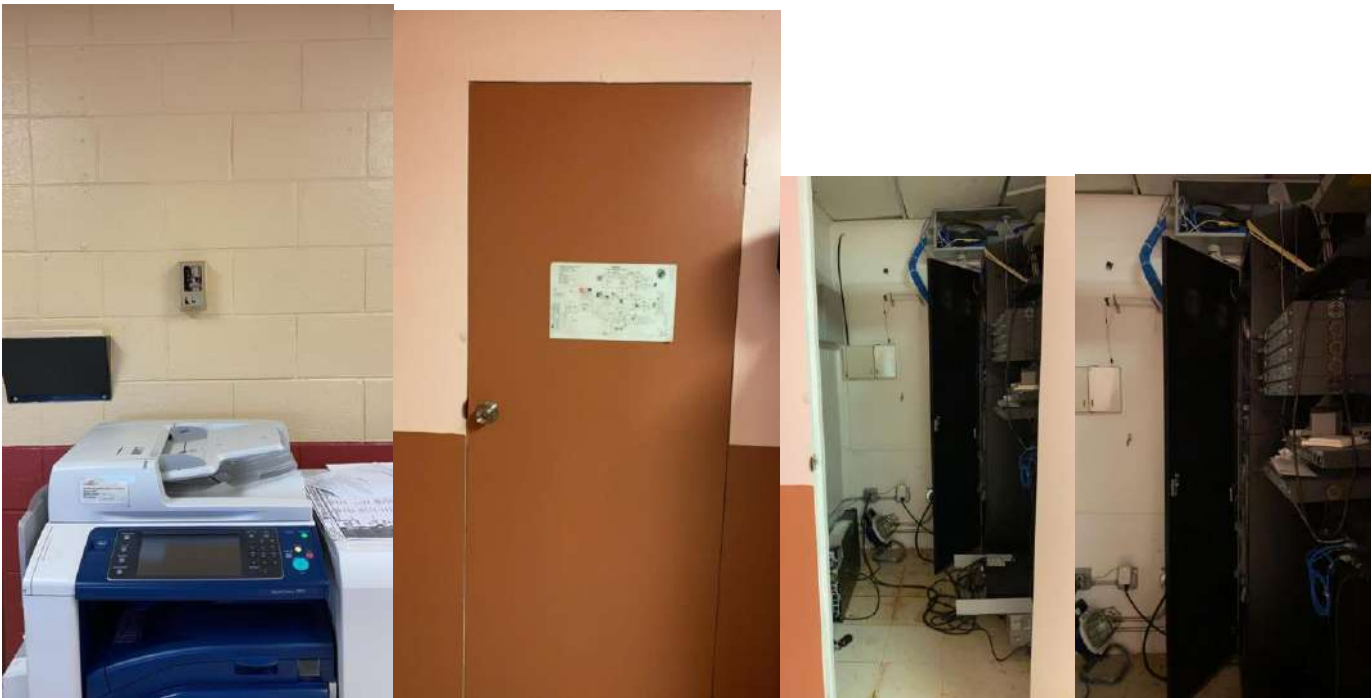
Server room location.

FINEGAYAN ELEMENTARY SCHOOL

1. **Project Location Address: 194 Chalan Kasperbauer Dededo, Guam 96929**
2. **Latitude-Longitude: 13°33'59"N 144°50'49"E**
3. **Location where device is to be installed: Main Office Area**
4. **Wall construction type : Concrete**
5. **Power source : Power over Ethernet (PoE)**

NOTE: When using PoE, the only required connection is the data/power cable from the PoE data equipment.

- Installation Materials :**
1. **Wiremold double-gang surface mount box (1ea.)**
 2. **CAT5e Internet cable with RJ-45 connectors (65 ft.)**
 3. **Interior wire mouldings/coverings.(65ft.)**
 4. **Rechargeable batteries (AA-6ea.)**



F.B.LEON GUERRERO MIDDLE SCHOOL

1. Project Location Address: Building # 533 Juan Jacinto Rd. Yigo, Guam 96929
2. Latitude-Longitude : 13°31'41"N 144°52'32"E
3. Recipient Summary of where it will be installed: Main Office Area
4. Wall construction type : Concrete
5. Power source : Power over Ethernet (PoE)

NOTE: When using PoE, the only required connection is the data/power cable from the PoE data equipment.

- Installation Materials :**
1. Wiremold double-gang surface mount box (1ea.)
 2. CAT5e Internet cable with RJ-45 connectors (45 ft.)
 3. Interior wire mouldings/coverings.(45ft.)
 4. Rechargeable batteries (AA-6ea.)

Beacon will be in admin office below the painting. The wires will go through the drop ceiling and into the server room.

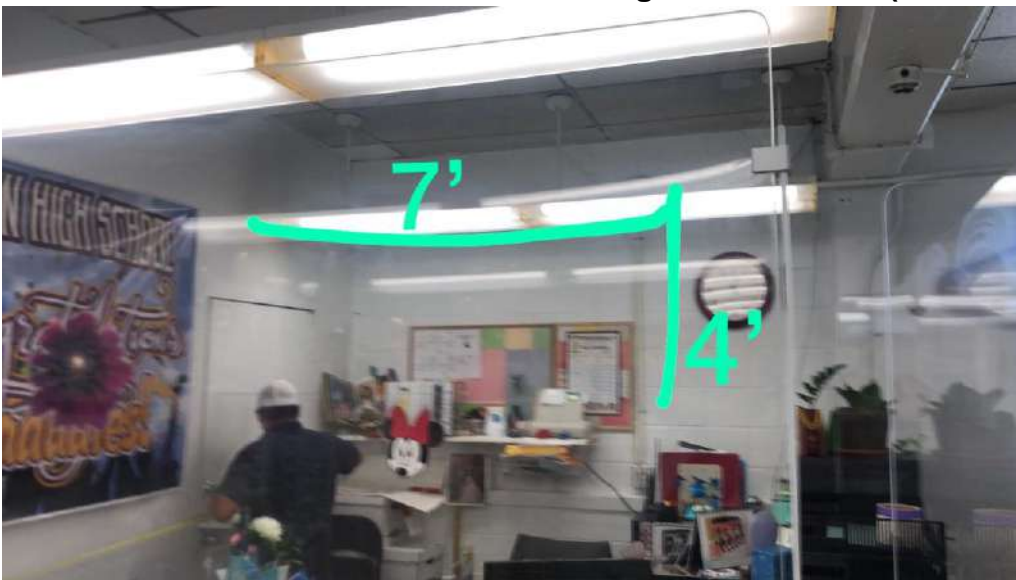


GEORGE WASHINGTON HIGH SCHOOL

1. Project Location Address: 298 Washington Drive Mangilao, Guam 96923
2. Location to be Installed : Main Office Area
3. Wall construction type : Concrete
4. Power source : Power over Ethernet (PoE)

NOTE: When using PoE, the only required connection is the data/power cable from the PoE data equipment.

- Installation Materials :**
1. Wiremold double-gang surface mount box (1ea.)
 2. CAT5e Internet cable with RJ-45 connectors (40 ft.)
 3. Interior wire mouldings/coverings.(40ft.)
 4. Rechargeable batteries (AA-6ea.)



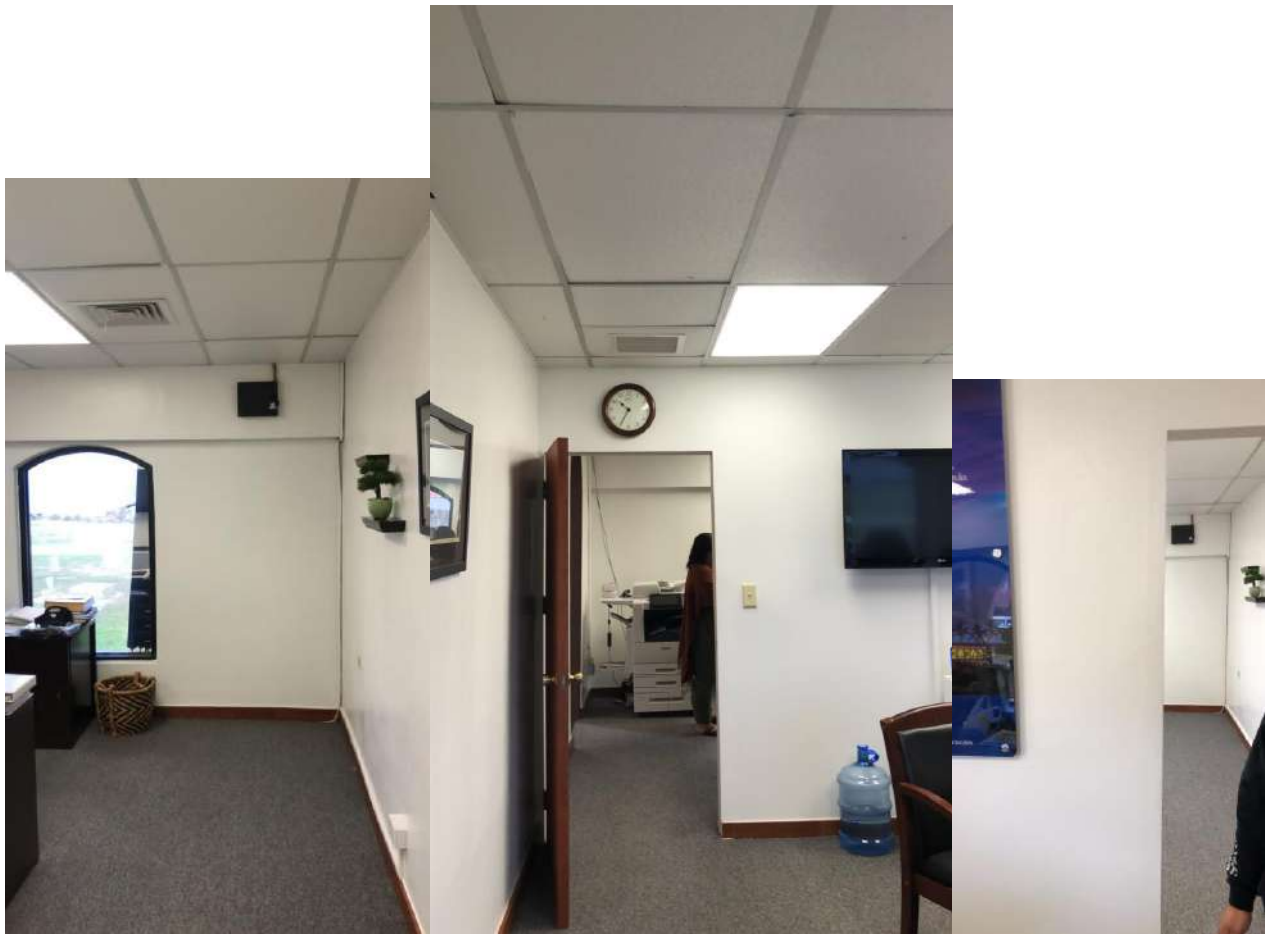


GOVERNOR'S OFFICE

1. **Project Location Address:** Ricardo J. Bordallo Complex, 513 West Marine Corps Dr, Hagåtña, 96910, Guam
2. **Location to be Installed :** Main Office Area, Governor and Lt. Governor's chambers
3. **Wall construction type :** Concrete
4. **Power source :** Power over Ethernet (PoE)

NOTE: When using PoE, the only required connection is the data/power cable from the PoE data equipment.

- Installation Materials :**
1. Wiremold double-gang surface mount box (1ea.)
 2. CAT5e Internet cable with RJ-45 connectors (40 ft.)
 3. Interior wire mouldings/coverings.(40ft.)
 4. Rechargeable batteries (AA-6ea.)



GUAM HOMELAND SECURITY / OFFICE OF CIVIL DEFENSE

1. **Project Location Address:** 221-B Chalan Palasyo, Agana Heights, 96910, Guam
2. **Location to be Installed :** Main Office Area, Fadian Point
3. **Wall/Roof construction type :** Concrete and Drop Ceiling
4. **Power source :** Power over Ethernet (PoE)

NOTE: When using PoE, the only required connection is the data/power cable from the PoE data equipment.

- Installation Materials :**
1. Wiremold double-gang surface mount box (1ea.)
 2. CAT5e Internet cable with RJ-45 connectors (250 ft.)
 3. Interior wire mouldings/coverings.(100 ft.)
 4. Rechargeable batteries (AA-6ea.)
 5. Speaker
 6. Marquee

5. Scope of Work: The ethernet line is already connected to the server room. The beacon (left image) needs to be reinstalled to have a black bracket mount. The 4 alert buttons need to be reinstalled and mounted on the wall (right image). Speaker will be installed by the ice room, 80 feet away from the alert beacon. Marquee will be installed in the initial operations facility.



Speaker located near the ice room.

Marquee located in the Initial Operating Facility by the TV.



GUAM POWER AUTHORITY

1. **Project Location Address:** 688 Route 15, Mangilao Guam 96913
2. **Location to be Installed :** Main Office Area, Fadian Point
3. **Wall construction type :** Concrete
4. **Power source :** Power over Ethernet (PoE)

NOTE: When using PoE, the only required connection is the data/power cable from the PoE data equipment.

- Installation Materials :**
1. Wiremold double-gang surface mount box (1ea.)
 2. CAT5e Internet cable with RJ-45 connectors (55 ft.)
 3. Interior wire mouldings/coverings.(45ft.)
 4. Rechargeable batteries (AA-6ea.)

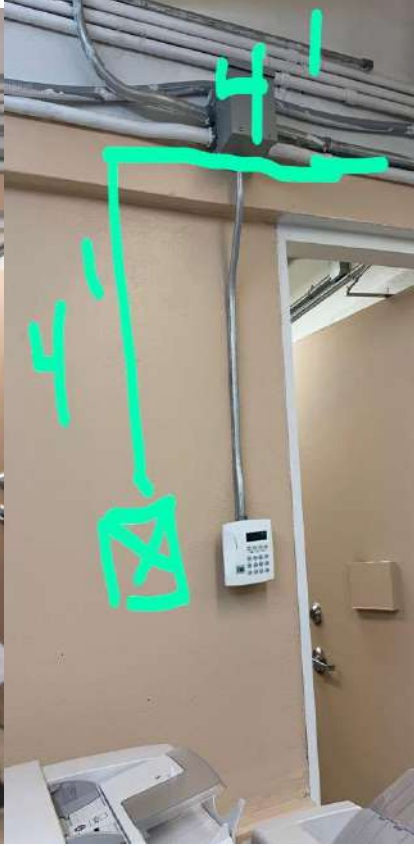


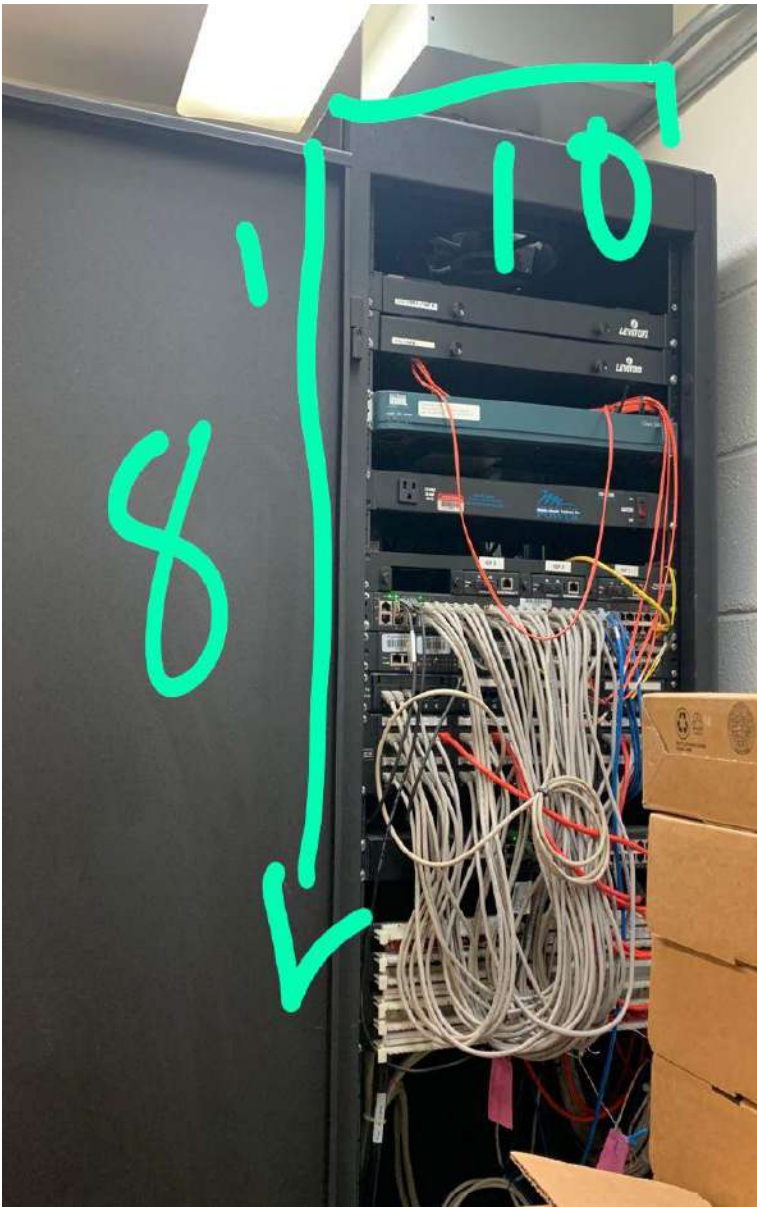
HARRY S. TRUMAN ELEMENTARY SCHOOL

1. **Project Location Address:** 182 Pale Ferdinand Way,, Santa Rita, Guam 96915
2. **Latitude-Longitude** : 13°32'04"N 144°53'42"E
3. **Location to be Installed** : Main Office Area
4. **Wall construction type** : Concrete
5. **Power source** : Power over Ethernet (PoE)

NOTE: When using PoE, the only required connection is the data/power cable from the PoE data equipment.

- Installation Materials :**
1. Wiremold double-gang surface mount box (1ea.)
 2. CAT5e Internet cable with RJ-45 connectors (35 ft.)
 3. Interior wire mouldings/coverings.(35ft.)
 4. Rechargeable batteries (AA-6ea.)



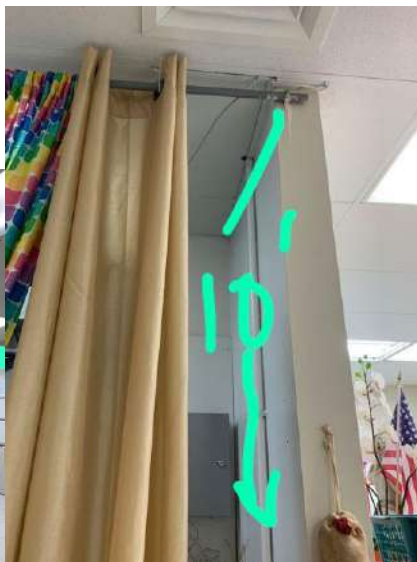
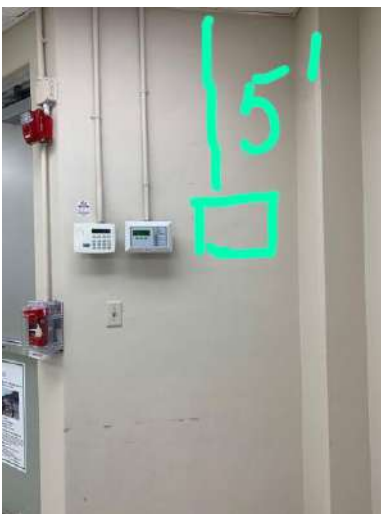


INALAHAN ELEMENTARY SCHOOL

1. Project Location Address: # 136 Pale Barnabe Inalahan
2. Latitude-Longitude : 13.273435, 144.746749
3. Location where device is to be installed: Main Office Area
4. Wall construction type : Concrete
5. Power source : Power over Ethernet (PoE)

NOTE: When using PoE, the only required connection is the data/power cable from the PoE data equipment.

- Installation Materials :**
1. Wiremold double-gang surface mount box (1ea.)
 2. CAT5e Internet cable with RJ-45 connectors (35 ft.)
 3. Interior wire mouldings/coverings.(35ft.)
 4. Rechargeable batteries (AA-6ea.)



INALAHAN MAYOR'S OFFICE

1. Project Location Address: Inarajan ,Guam
2. Latitude-Longitude: 13.28216, 144.74650
3. Recipient Summary of where it will be installed: Main office Area
4. Wall construction type : Concrete
5. Power : Unit will need to be powered by A/C Transformer.

- Installation materials:
1. (Power A/C) 18AWG, 3-conductor cable (15 ft.)
Wiremold double-gang surface mount box (1ea.)
 2. CAT5e Internet cable with RJ-45 connectors (15ft.)
 3. Interior wire mouldings/coverings.(15ft.)
 4. Rechargeable batteries (AA-6ea.)



INALAHAN MIDDLE SCHOOL

1. Project Location Address: 136 Pale Bernabe Circle Inarajan Guam 96915
2. Latitude-Longitude: 13°16'23"N 144°44'45"E
3. Location where device is to be installed: Main Office Area
4. Wall construction type : Concrete
5. Power source : Power over Ethernet (PoE)

NOTE: When using PoE, the only required connection is the data/power cable from the PoE data equipment.

- Installation Materials :**
1. Wiremold double-gang surface mount box (1ea.)
 2. CAT5e Internet cable with RJ-45 connectors (40 ft.)
 3. Interior wire mouldings/coverings.(40ft.)
 4. Rechargeable batteries (AA-6ea.)

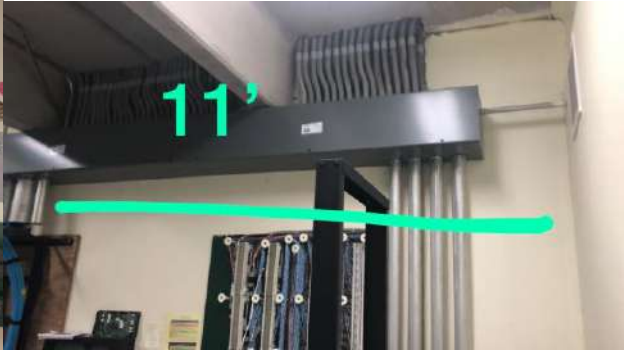
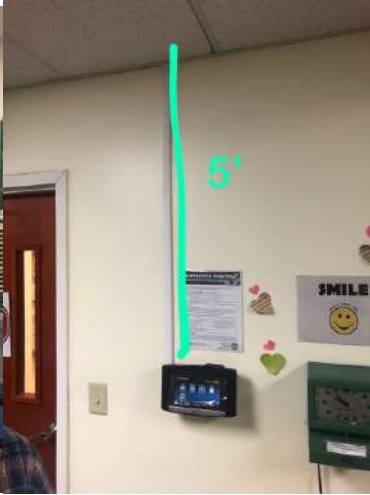


JOHN F. KENNEDY HIGH SCHOOL

1. **Project Location Address: 331 N. Marine Corps Dr. Tamuning, Guam**
2. **Latitude-Longitude: 13°29'51"N 144°47'54"E**
3. **Recipient Summary of where it will be installed: Main office Area**
4. **Wall construction type : Concrete**
5. **Power source : Power over Ethernet (PoE)**

NOTE: When using PoE, the only required connection is the data/power cable from the PoE data equipment.

- Installation Materials :**
1. **Wiremold double-gang surface mount box (1ea.)**
 2. **CAT5e Internet cable with RJ-45 connectors (25-40 ft.)**
 3. **Interior wire mouldings/coverings.(25ft.)**
 4. **Rechargeable batteries (AA-6ea.)**

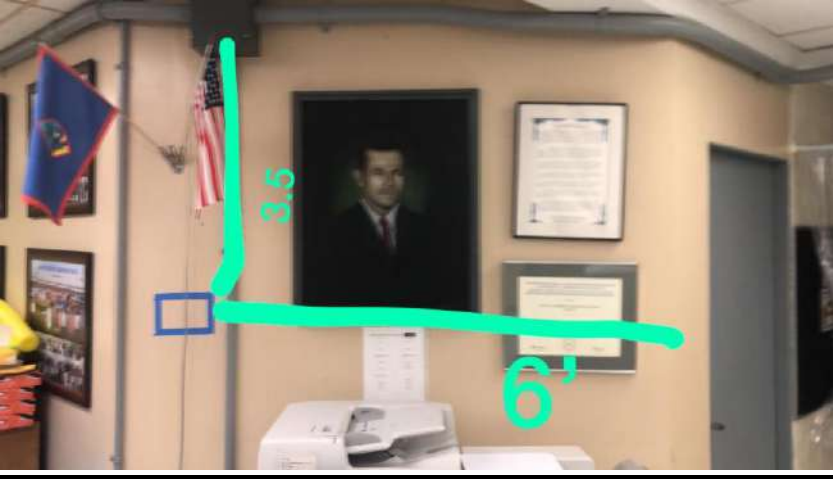


J.M. GUERRERO ELEMENTARY SCHOOL

1. **Project Location Address: # 520 Harmon Loop Road Dededo, Guam 96929**
2. **Latitude-Longitude: 13.51085, 144.82479**
3. **Recipient Summary of where it will be installed: Main office Area**
4. **Wall construction type : Concrete**
5. **Power source : Power over Ethernet (PoE)**

NOTE: When using PoE, the only required connection is the data/power cable from the PoE data equipment.

- Installation Materials :**
1. **Wiremold double-gang surface mount box (1ea.)**
 2. **CAT5e Internet cable with RJ-45 connectors (80 ft.)**
 3. **Interior wire mouldings/coverings.(80ft.)**
 4. **Rechargeable batteries (AA-6ea.)**

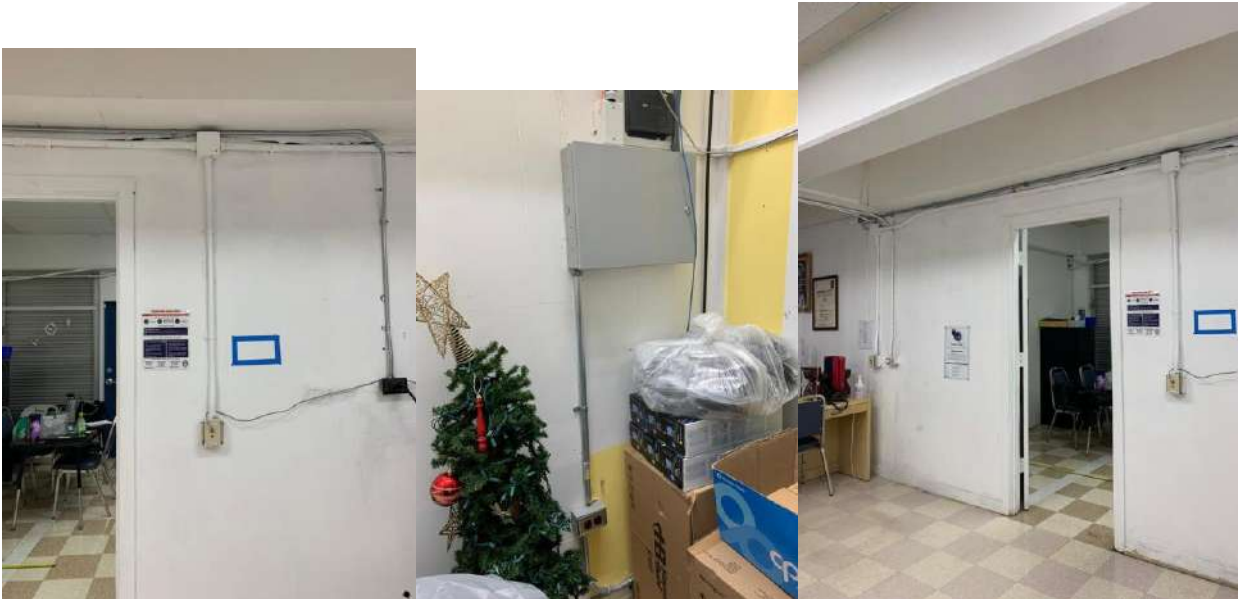
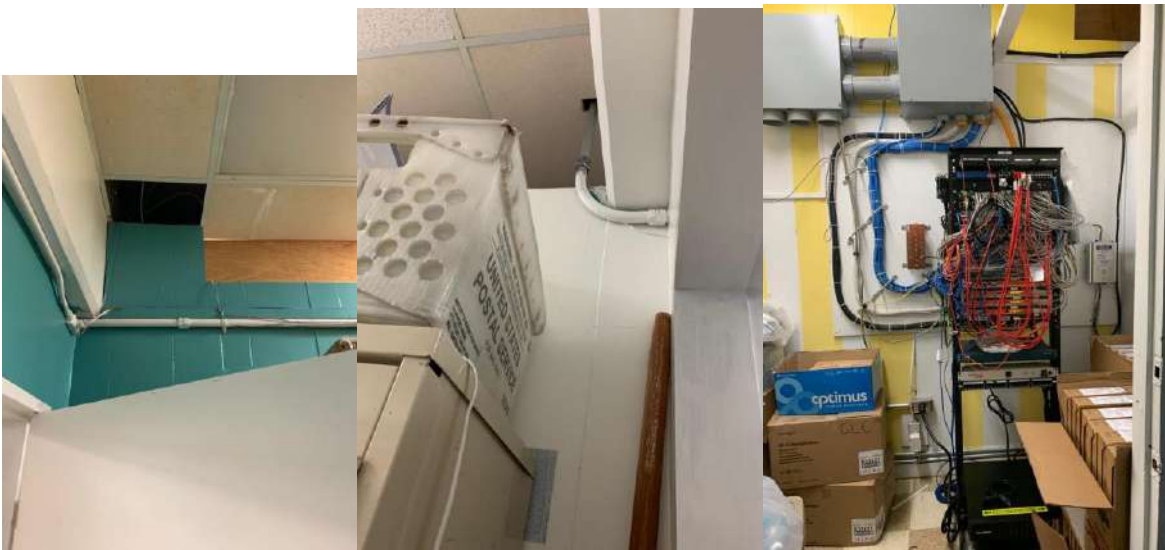


J.Q. SAN MIGUEL ELEMENTARY SCHOOL

1. **Project Location Address: 491 CLARA ROAD TOTO, GU 96910**
2. **Latitude-Longitude: 13°29'51"N 144°47'54"E**
3. **Recipient Summary of where it will be installed: Main office Area**
4. **Wall construction type : Concrete**
5. **Power source : Power over Ethernet (PoE)**

NOTE: When using PoE, the only required connection is the data/power cable from the PoE data equipment.

- Installation Materials :**
1. **Wiremold double-gang surface mount box (1ea.)**
 2. **CAT5e Internet cable with RJ-45 connectors (40 ft.)**
 3. **Interior wire mouldings/coverings.(40ft.)**
 4. **Rechargeable batteries (AA-6ea.)**



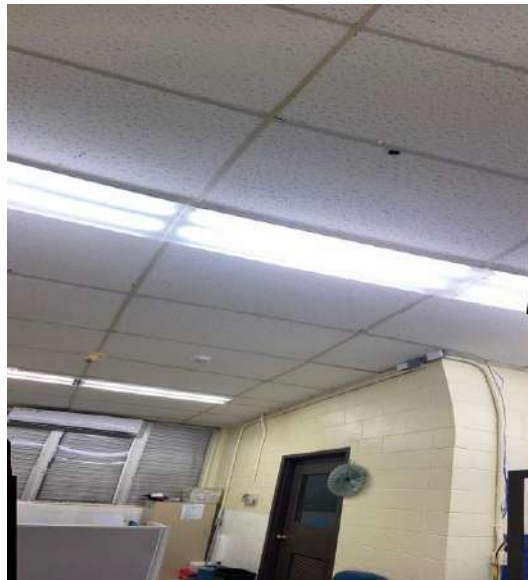
Beacon location is marked in blue tape.

JOSE L.G. RIOS MIDDLE SCHOOL

1. **Project Location Address: 165 Spruance Drive, Piti Guam 96913**
2. **Latitude-Longitude: 13°27'27"N 144°41'28"E**
3. **Recipient Summary of where it will be installed: Main Office**
4. **Wall construction type : Concrete**
5. **Power source : Power over Ethernet (PoE)**

NOTE: When using PoE, the only required connection is the data/power cable from the PoE data equipment.

- Installation Materials :**
1. **Wiremold double-gang surface mount box (1ea.)**
 2. **CAT5e Internet cable with RJ-45 connectors (25 ft.)**
 3. **Interior wire mouldings/coverings.(25ft.)**
 4. **Rechargeable batteries (AA-6ea.)**



Ethernet cord will be hidden on the drop ceiling.

L.B. JOHNSON ELEMENTARY SCHOOL

1. Project Location Address: 140 Felis Street Tamuning Guam 96913
2. Recipient Summary of where it will be installed: Main office Area
3. Wall construction type : Concrete
4. Power source : Power over Ethernet (PoE)

NOTE: When using PoE, the only required connection is the data/power cable from the PoE data equipment.

- Installation Materials :**
1. Wiremold double-gang surface mount box (1ea.)
 2. CAT5e Internet cable with RJ-45 connectors (40 ft.)
 3. Interior wire mouldings/coverings.(40ft.)
 4. Rechargeable batteries (AA-6ea.)

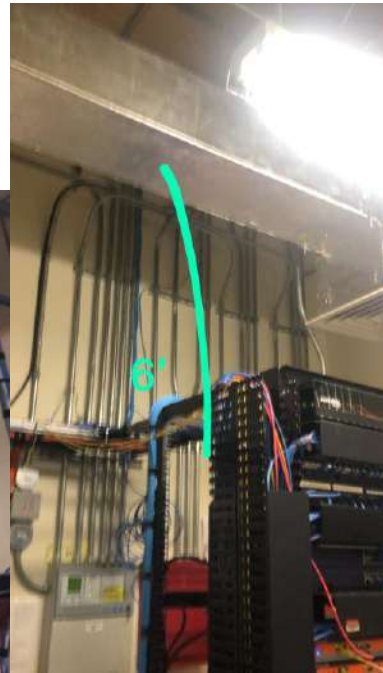
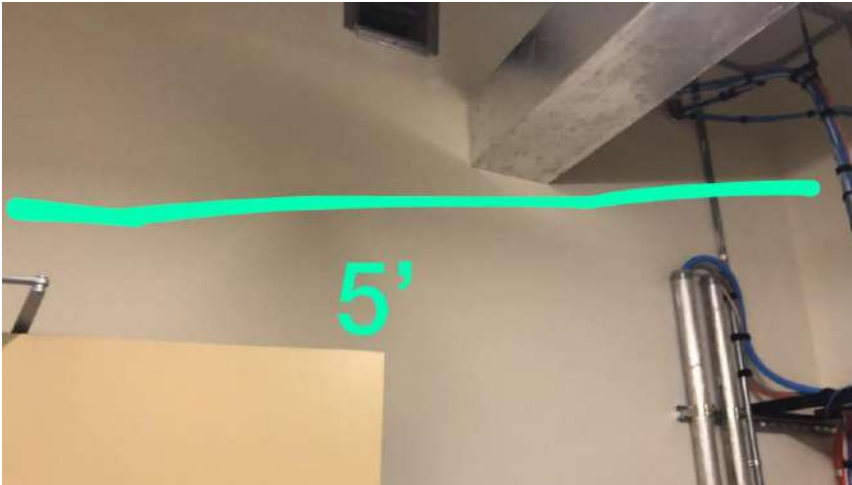


LIGUAN ELEMENTARY SCHOOL

1. **Project Location Address: #237 N Chalan Ligan, Dededo Guam 96929**
2. **Latitude-Longitude: 13.51837, 144.82712**
3. **Recipient Summary of where it will be installed: Main office Area**
4. **Wall construction type : Concrete**
5. **Power source : Power over Ethernet (PoE)**

NOTE: When using PoE, the only required connection is the data/power cable from the PoE data equipment.

- Installation Materials :**
1. **Wiremold double-gang surface mount box (1ea.)**
 2. **CAT5e Internet cable with RJ-45 connectors (42 ft.)**
 3. **Interior wire mouldings/coverings.(42ft.)**
 4. **Rechargeable batteries (AA-6ea.)**



L.P. UNTALAN MIDDLE SCHOOL

1. **Project Location Address: 256 Vietnam Veteran's Highway Barrigada, Guam 96913**
2. **Latitude-Longitude: 13°27'55"N 144°48'02"E**
3. **Recipient Summary of where it will be installed: Student Support Office.**
4. **Wall construction type : Concrete**
5. **Power source : Power over Ethernet (PoE)**

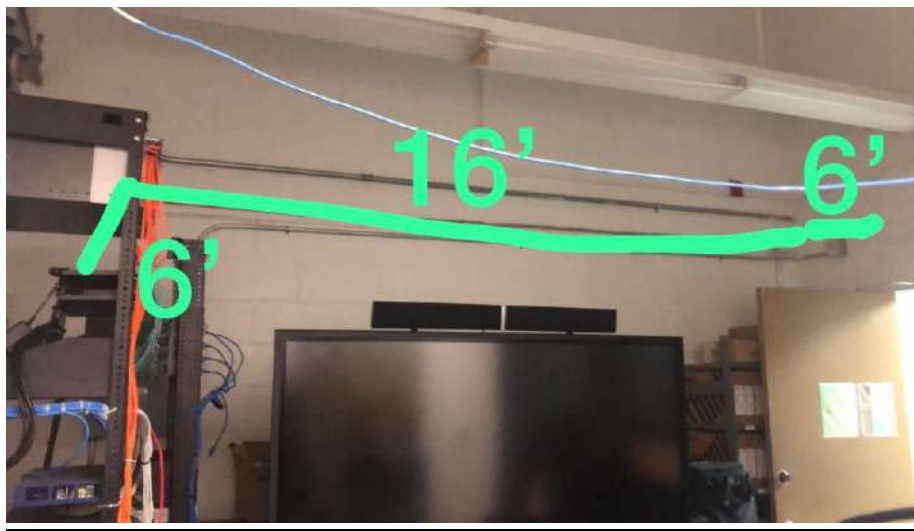
NOTE: When using PoE, the only required connection is the data/power cable from the PoE data equipment.

- Installation Materials :**
1. **Wiremold double-gang surface mount box (1ea.)**
 2. **CAT5e Internet cable with RJ-45 connectors (55 ft.)**
 3. **Interior wire mouldings/coverings.(55ft.)**
 4. **Rechargeable batteries (AA-6ea.)**



M.A. Ulloa Elementary School

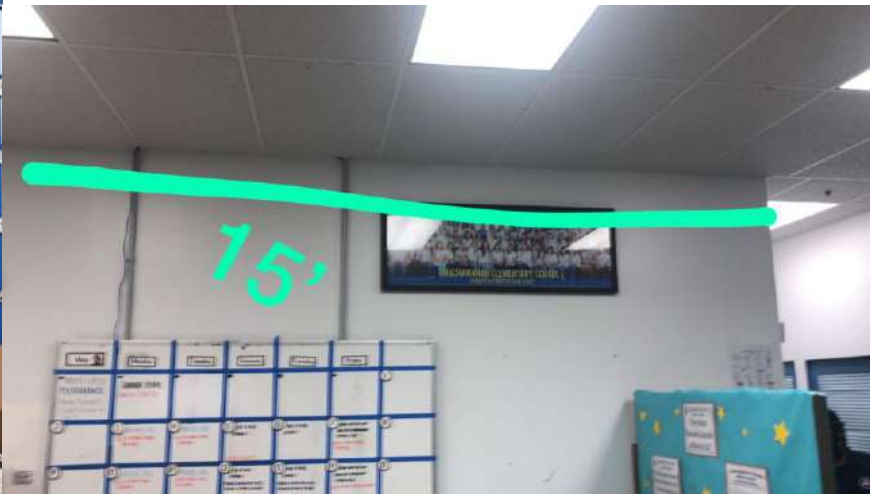
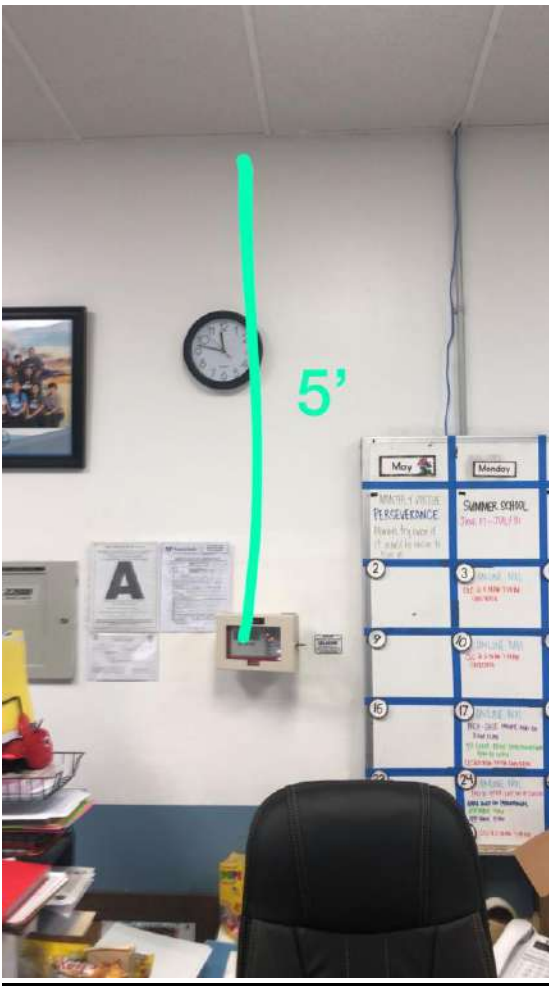
1. **Project Location Address:** 110 Catalina Lane Dededo
 2. **Location to be Installed :** **Main Office Area**
 3. **Wall type :** **Concrete**
- Power :** **Unit will need to be powered by A/C Transformer**
- Installation Materials :**



Machananao Elementary School

1. **Project Location Address:** Rte. 9, Yigo
 2. **Location to be Installed :** Main Office Area
 3. **Wall type :** Concrete
- Power :** Unit will need to be powered by A/C Transformer

Installation Materials :



Outlet is within 5 feet of the beacon. The beacon will be near the white board, above the existing alarm in the image on the left. The ethernet will run 5 feet above and be hidden in the drop ceiling. The ethernet cable will run 15 feet to the right.

MANGILAO MAYOR'S OFFICE

1. Project Location Address: #105 Commissioner Way Route-10,Mangilao
2. Latitude-Longitude: 13.44914,144.80215
3. Location to be Installed : Main Office Area
4. Wall type : Concrete

Power : Unit will need to be powered by A/C Transformer

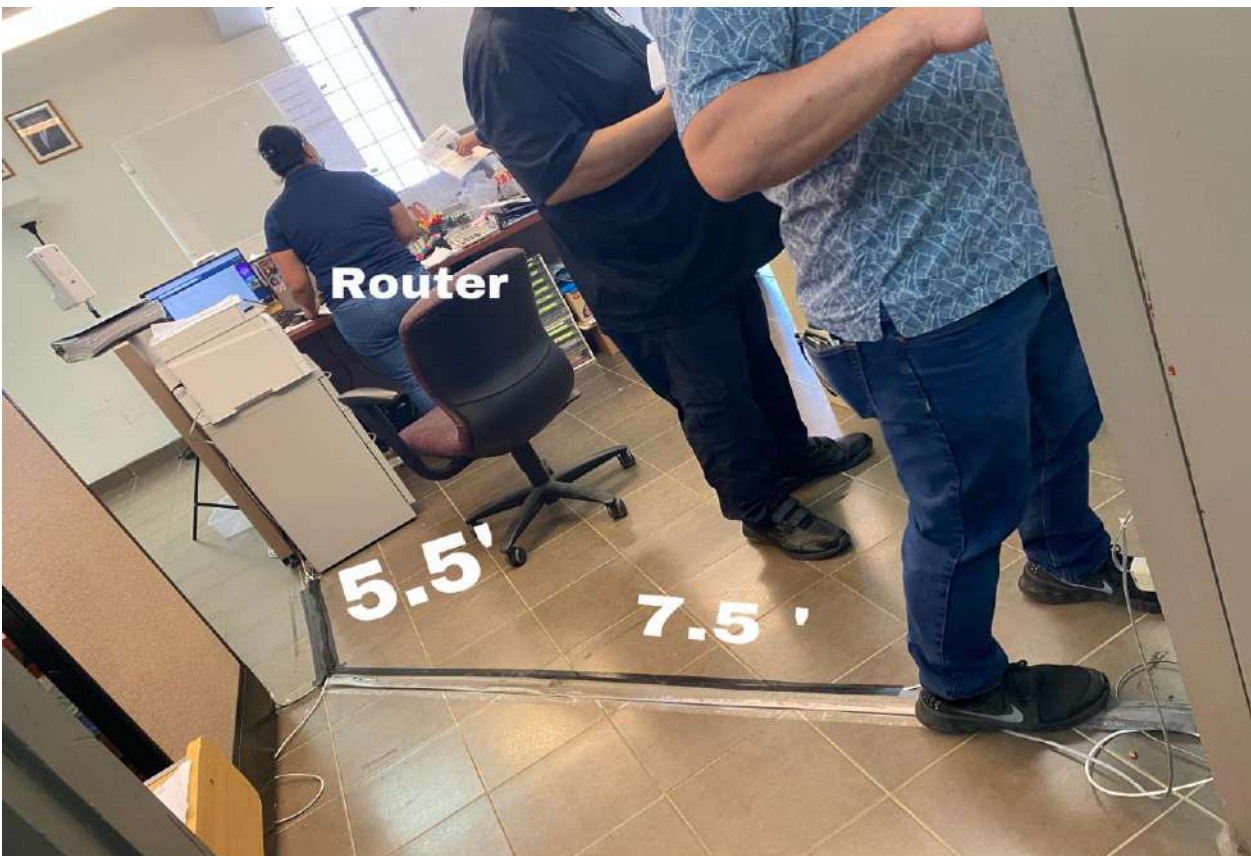
Installation Materials : 1. (Power A/C) 18AWG, 3-conductor cable (8ft.)

Wiremold double-gang surface mount box (1ea.)

2. CAT5e Internet cable with RJ-45 connectors (13ft.)

3. Interior wire mouldings/coverings.(21ft.)

4. Rechargeable batteries (AA-6ea.)



Beacon is 4 feet from the wall on the left side of the image. Outlet is also on the wall.

MAYOR'S COUNCIL OF GUAM

1. **Project Location Address: 215A Chalan Santo Papa, Suites 110F & 111F Commercial Center, Hagatna, Guam 96932**
2. **Recipient Summary of where it will be installed: Main office Area**
3. **Wall construction type : Concrete**
4. **Power : Unit will need to be powered by A/C Transformer.**

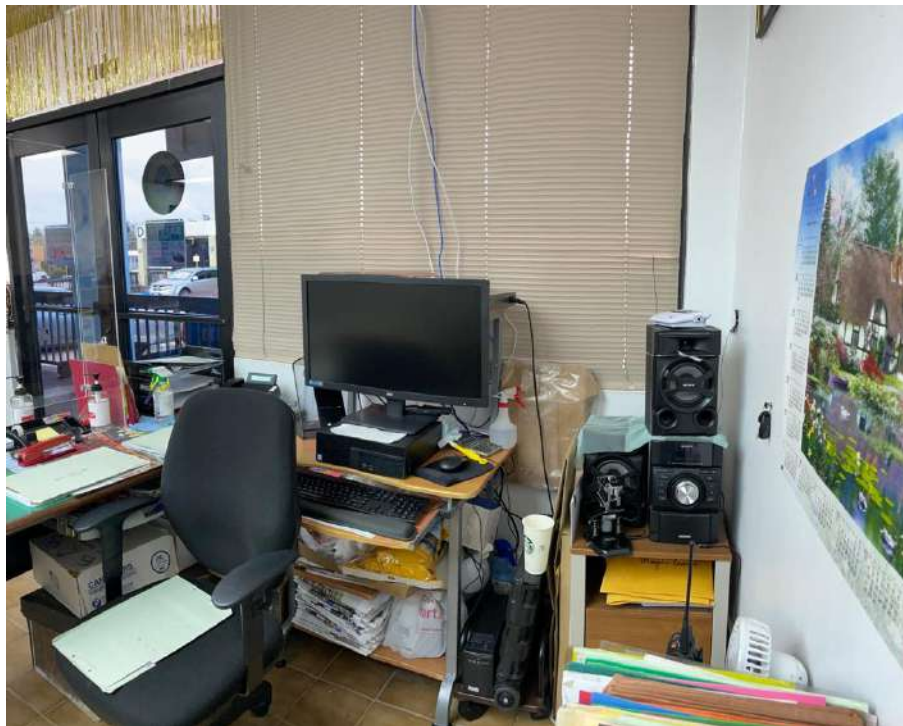
Installation materials: 1. (Power A/C) 18AWG, 3-conductor cable (8ft.)

Wiremold double-gang surface mount box (1ea.)

2. CAT5e Internet cable with RJ-45 connectors (30ft.)

3. Interior wire mouldings/coverings.(30ft.)

4. Rechargeable batteries (AA-6ea.)



Beacon will be mounted on the wall on the right side of image.

MERIZO MAYOR'S OFFICE

1. Project Location Address: # 440 Chalan Joseph A. Cruz Merizo, Guam
2. Latitude-Longitude: 13.27166, 144.67437
3. Recipient Summary of where it will be installed: Main office Area
4. Wall construction type : Concrete
5. Power : Unit will need to be powered by A/C Transformer.

Installation materials: 1. (Power A/C) 18AWG, 3-conductor cable (8ft.)

Wiremold double-gang surface mount box (1ea.)

2. CAT5e Internet cable with RJ-45 connectors (30ft.)

3. Interior wire mouldings/coverings.(30ft.)

4. Rechargeable batteries (AA-6ea.)

Router in 30 feet away. The beacon will be mounted on the wall near the window, above the outlet.



MONGMONG-TOTO-MAITE MAYORS OFFICE

1. Project Location Address: Bldg. 226 Aragon Street, Toto
2. Latitude-Longitude: 12.46775, 144.78389
3. Location to be Installed : Main Office Area/Community Center
4. Wall - type : Concrete

Power : Unit will need to be powered by A/C Transformer.

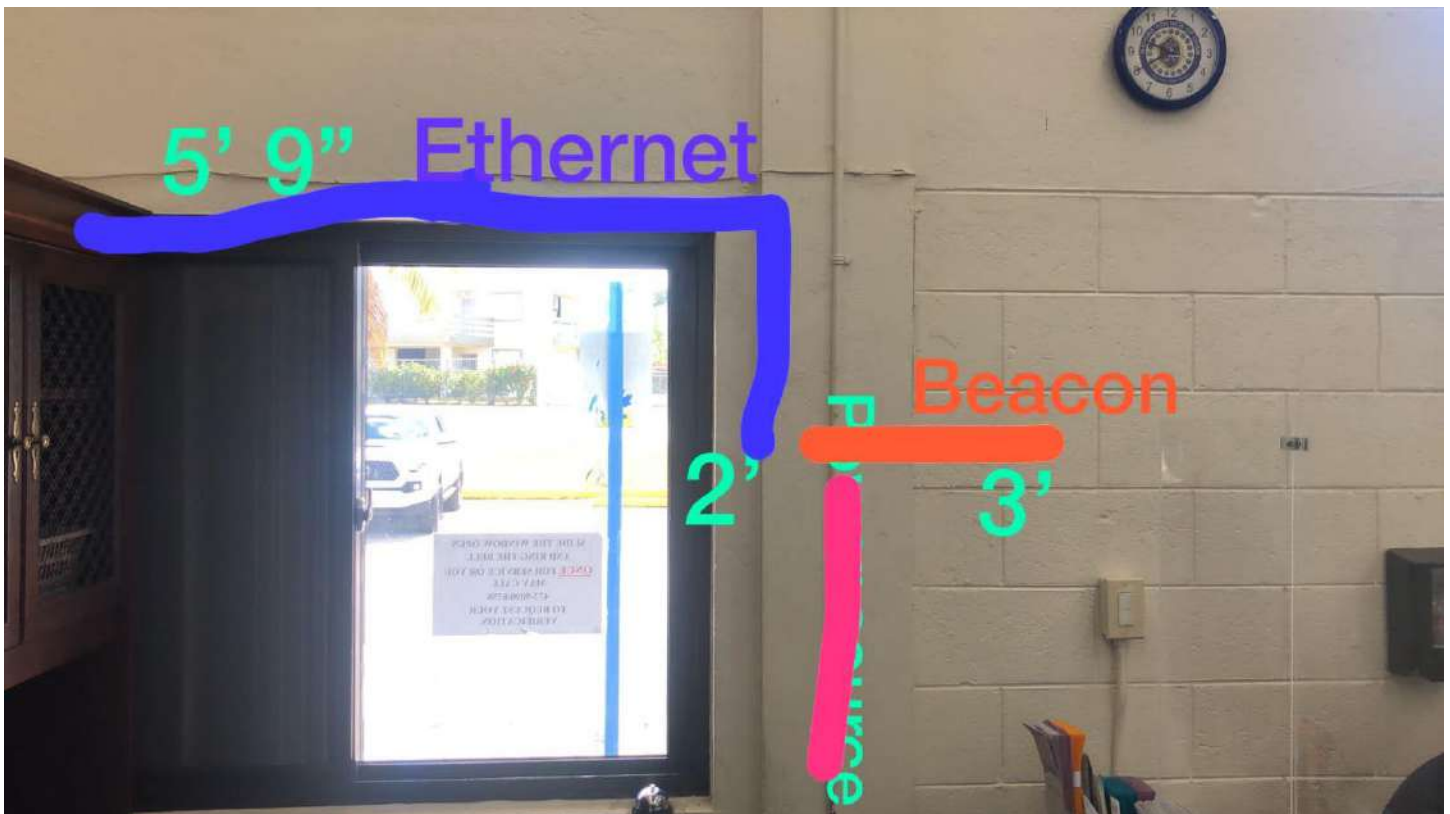
Installation Materials : 1. (Power A/C) 18AWG, 3-conductor cable (7ft.)

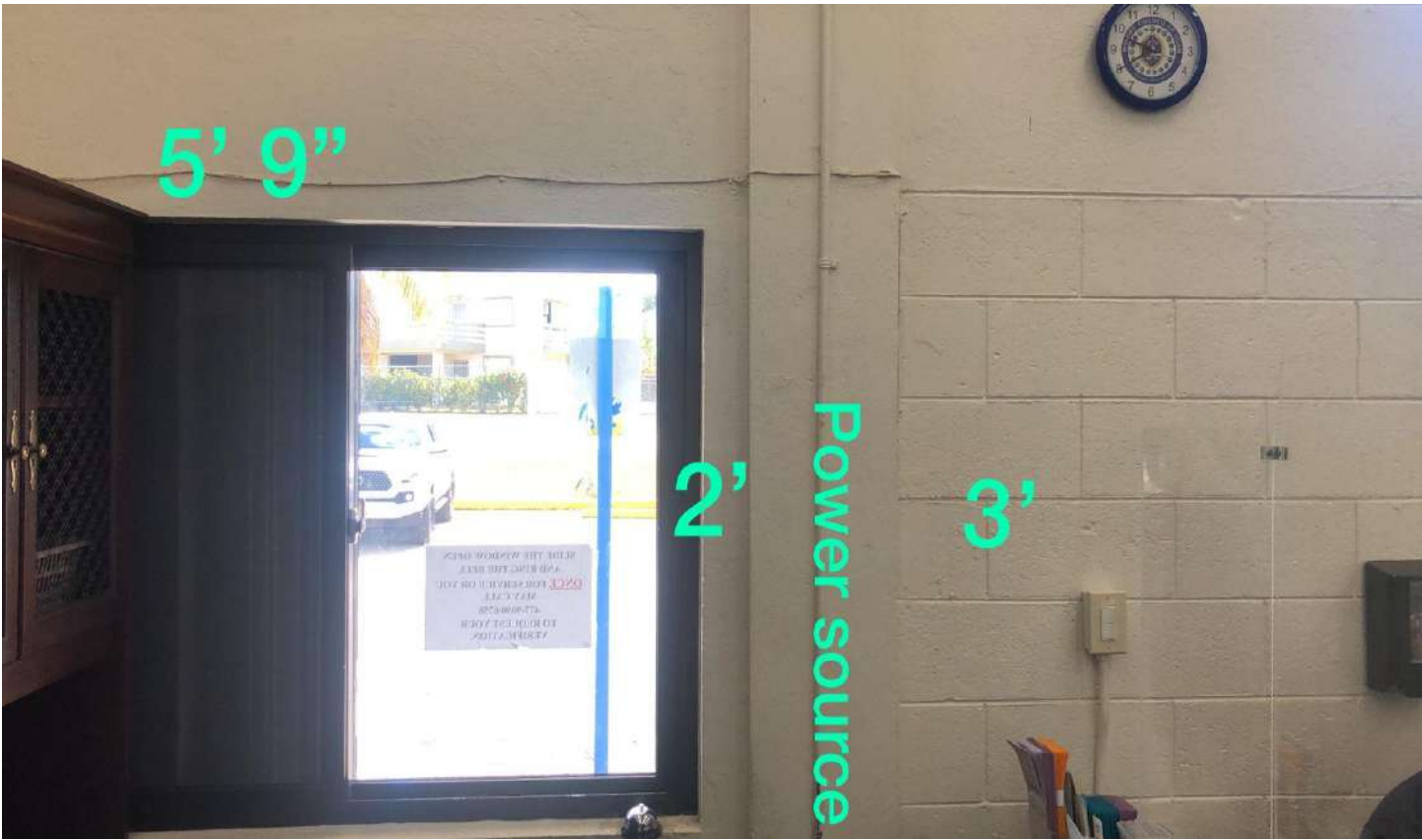
Wiremold double-gang surface mount box (1ea.)

2. CAT5e Internet cable with RJ-45 connectors (30ft.)

3. Interior wire mouldings/coverings.(37ft.)

4. Rechargeable batteries (AA-6ea.)



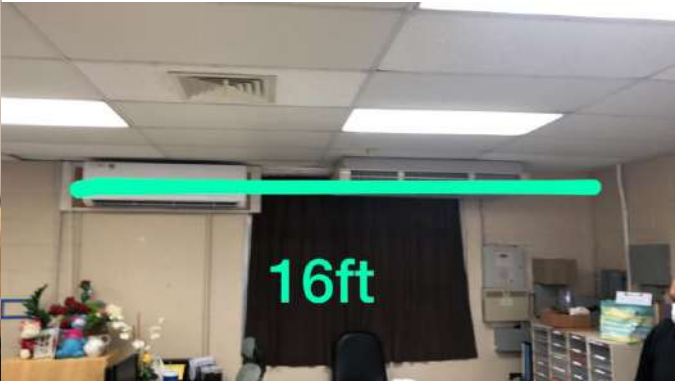


OCEANVIEW MIDDLE SCHOOL

1. **Project Location Address: 184 Erskin Drive Agat, Guam**
2. **Latitude-Longitude: 13°23'20"N 144°39'42"E**
3. **Recipient Summary of where it will be installed: Main Office Area**
4. **Wall construction type : Concrete**
5. **Power source : Power over Ethernet (PoE)**

NOTE: When using PoE, the only required connection is the data/power cable from the PoE data equipment.

- Installation Materials :**
1. **Wiremold double-gang surface mount box (1ea.)**
 2. **CAT5e Internet cable with RJ-45 connectors (50 ft.)**
 3. **Interior wire mouldings/coverings.(50ft.)**
 4. **Rechargeable batteries (AA-6ea.)**



OFFICE OF TECHNOLOGY

1. **Project Location Address: 184 Erskin Drive Agat, Guam**
2. **Recipient Summary of where it will be installed: Main Office Area**
3. **Wall construction type : Concrete**
4. **Power source : Power over Ethernet (PoE)**

NOTE: When using PoE, the only required connection is the data/power cable from the PoE data equipment.

- Installation Materials :**
1. **Wiremold double-gang surface mount box (1ea.)**
 2. **CAT5e Internet cable with RJ-45 connectors (50 ft.)**
 3. **Interior wire mouldings/coverings.(50ft.)**
 4. **Rechargeable batteries (AA-6ea.)**

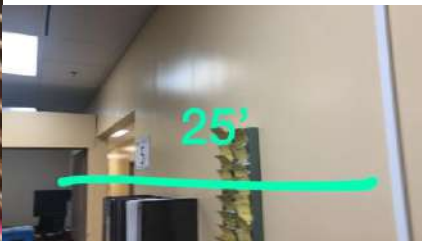


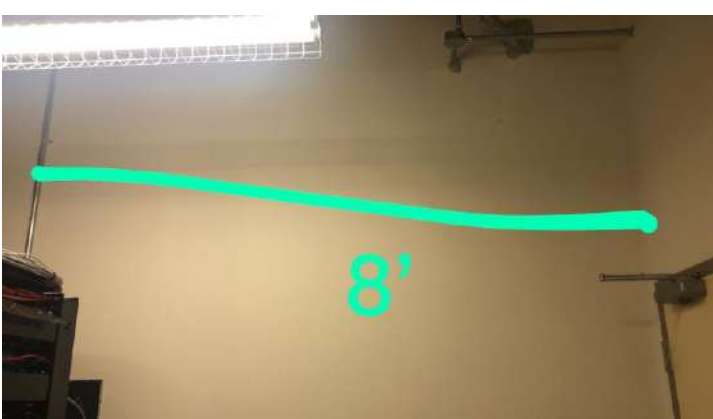
OKKODO HIGH SCHOOL

1. Project Location Address: 660 Rte.3 Dededo, Guam 96929
2. Latitude-Longitude: 13°32'09"N 144°49'50"E
3. Location where device is to be installed: Main Office Area
4. Wall construction type : Concrete
5. Power source : Power over Ethernet (PoE)

NOTE: When using PoE, the only required connection is the data/power cable from the PoE data equipment.

- Installation Materials :**
1. Wiremold double-gang surface mount box (1ea.)
 2. CAT5e Internet cable with RJ-45 connectors (62 ft.)
 3. Interior wire mouldings/coverings.(62ft.)
 4. Rechargeable batteries (AA-6ea.)



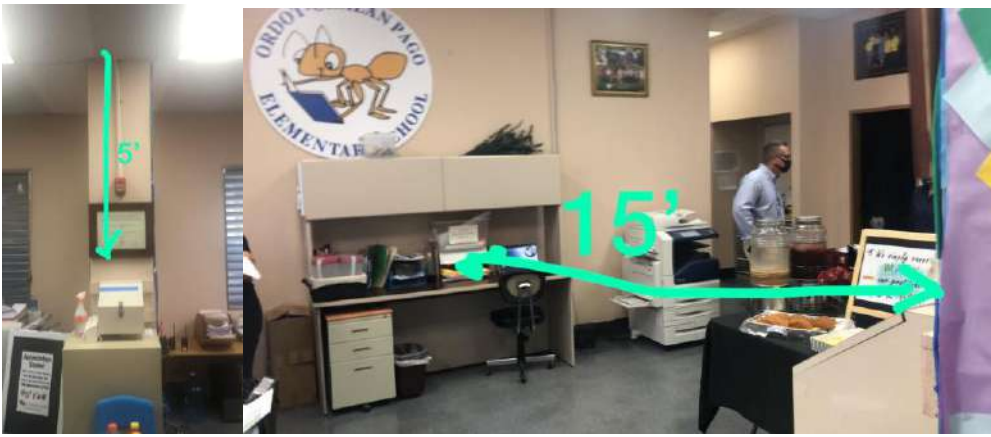


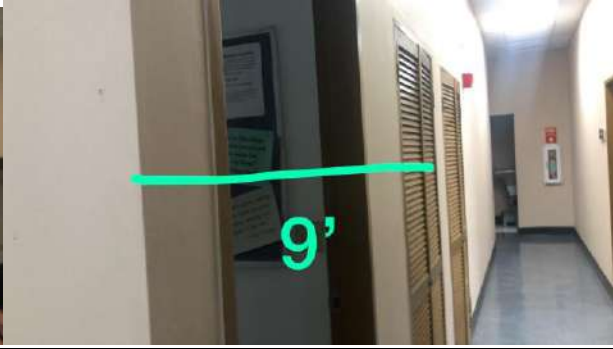
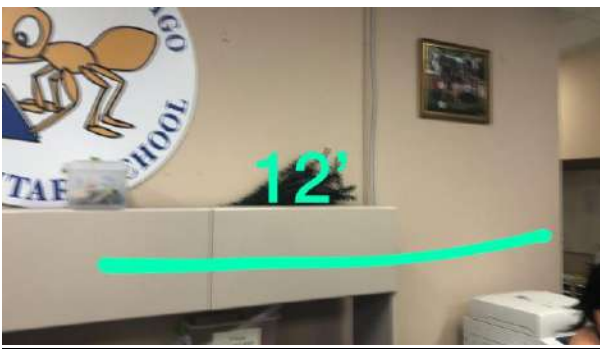
ORDOT-CHALAN PAGO ELEMENTARY SCHOOL

1. Project Location Address: 294 Judge Sablan St. Ordot, Guam 96910
2. Location where device is to be installed: Main Office Area
3. Wall construction type : Concrete
4. Power source : Power over Ethernet (PoE)

NOTE: When using PoE, the only required connection is the data/power cable from the PoE data equipment.

- Installation Materials :**
1. Wiremold double-gang surface mount box (1ea.)
 2. CAT5e Internet cable with RJ-45 connectors (96 ft.)
 3. Interior wire mouldings/coverings.(80ft.)
 4. Rechargeable batteries (AA-6ea.)





PITI MAYOR'S OFFICE

1. **Project Location Address:** PITI Guam
2. **Latitude-Longitude:** 13.46375, 144.69324
3. **Recipient Summary of where it will be installed:** Main office Area
4. **Wall construction type :** Concrete
5. **Power :** Unit will need to be powered by A/C Transformer.

Installation material : 1. (Power A/C) 18AWG, 3-conductor cable (4ft.)

Wiremold double-gang surface mount box (1ea.)

2. CAT5e Internet cable with RJ-45 connectors (4ft.)

3. Interior wire mouldings/coverings.(4ft.)

4. Rechargeable batteries (AA-6ea.)

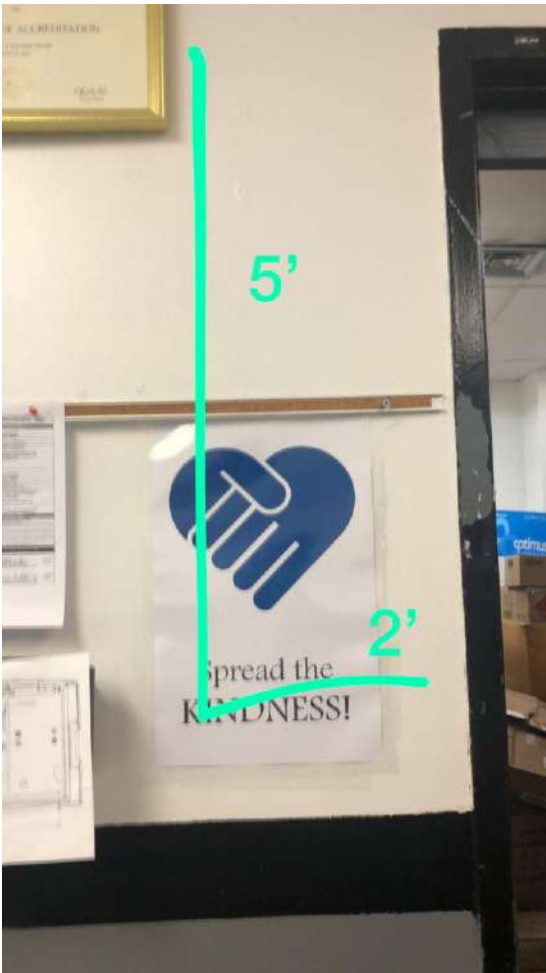


SIMON SANCHEZ HIGH SCHOOL

1. **Project Location Address: #395 Juan Jacinto Road, Yigo, Guam**
2. **Latitude-Longitude: 13°31'42"N 144°52'33"E**
3. **Recipient Summary of where it will be installed: Main office Area**
4. **Wall construction type : Concrete**
5. **Power source : Power over Ethernet (PoE)**

NOTE: When using PoE, the only required connection is the data/power cable from the PoE data equipment.

- Installation Materials :**
1. **Wiremold double-gang surface mount box (1ea.)**
 2. **CAT5e Internet cable with RJ-45 connectors (20ft.)**
 3. **Interior wire mouldings/coverings.(20ft.)**
 4. **Rechargeable batteries (AA-6ea.)**



SOUTHERN HIGH SCHOOL

1. Project Location Address: #1 Jose Perez Leon Guerrero Drive Santa Rita, GU 96915
2. Latitude-Longitude: 13°23'46"N 144°40'51"E
3. Recipient Summary of where it will be installed: Main Office Area
4. Wall construction type : Concrete
5. Power source : Power over Ethernet (PoE)

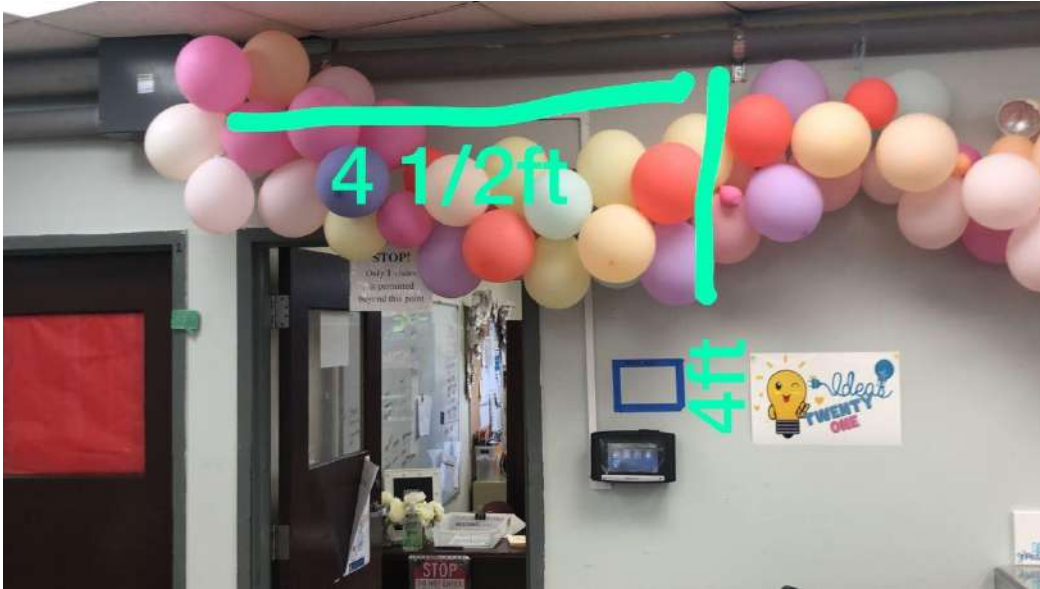
NOTE: When using PoE, the only required connection is the data/power cable from the PoE data equipment.

- Installation Materials :**
1. Wiremold double-gang surface mount box (1ea.)
 2. CAT5e Internet cable with RJ-45 connectors (25ft.)
 3. Interior wire mouldings/coverings.(25ft.)
 4. Rechargeable batteries (AA-6ea.)



Server Room

Ethernet cord will be drilled through the wall to get to the beacon mounted on the wall. The ethernet cable will be coming through above the door, 8 feet across and will drop 7 feet down to the modem.



Admin Office

The beacon is marked on the wall with blue tape. The ethernet cable will be drilled through the wall, instead of using the drop ceiling. The ethernet cable will rise 4 feet above and 4.5 feet going left of the beacon. The outlet is 5 feet below the beacon.

TALOFOFO MAYOR'S OFFICE

1. Project Location Address: # 184 N. San Miguel St. Talofofu Guam, 96915
2. Latitude-Longitude: 13.35587, 144.75582
3. Recipient Summary of where it will be installed: Main office Area
4. Wall construction type : Concrete
5. Power : Unit will need to be powered by A/C Transformer.

Installation materials: 1. (Power A/C) 18AWG, 3-conductor cable (10ft.)

Wiremold double-gang surface mount box (1ea.)

2. CAT5e Internet cable with RJ-45 connectors (10ft.)

3. Interior wire mouldings/coverings.(10ft.)

4. Rechargeable batteries (AA-6ea.)



TAMUNING-TUMON-HARMON MAYOR'S OFFICE

1. Project Location Address: 120 Tun Jesus Crisostomo, Tamuning, 96931, Guam
2. Recipient Summary of where it will be installed: Main office Area
3. Wall construction type : Concrete , Drop ceiling
4. Power : Unit will need to be powered by A/C Transformer.

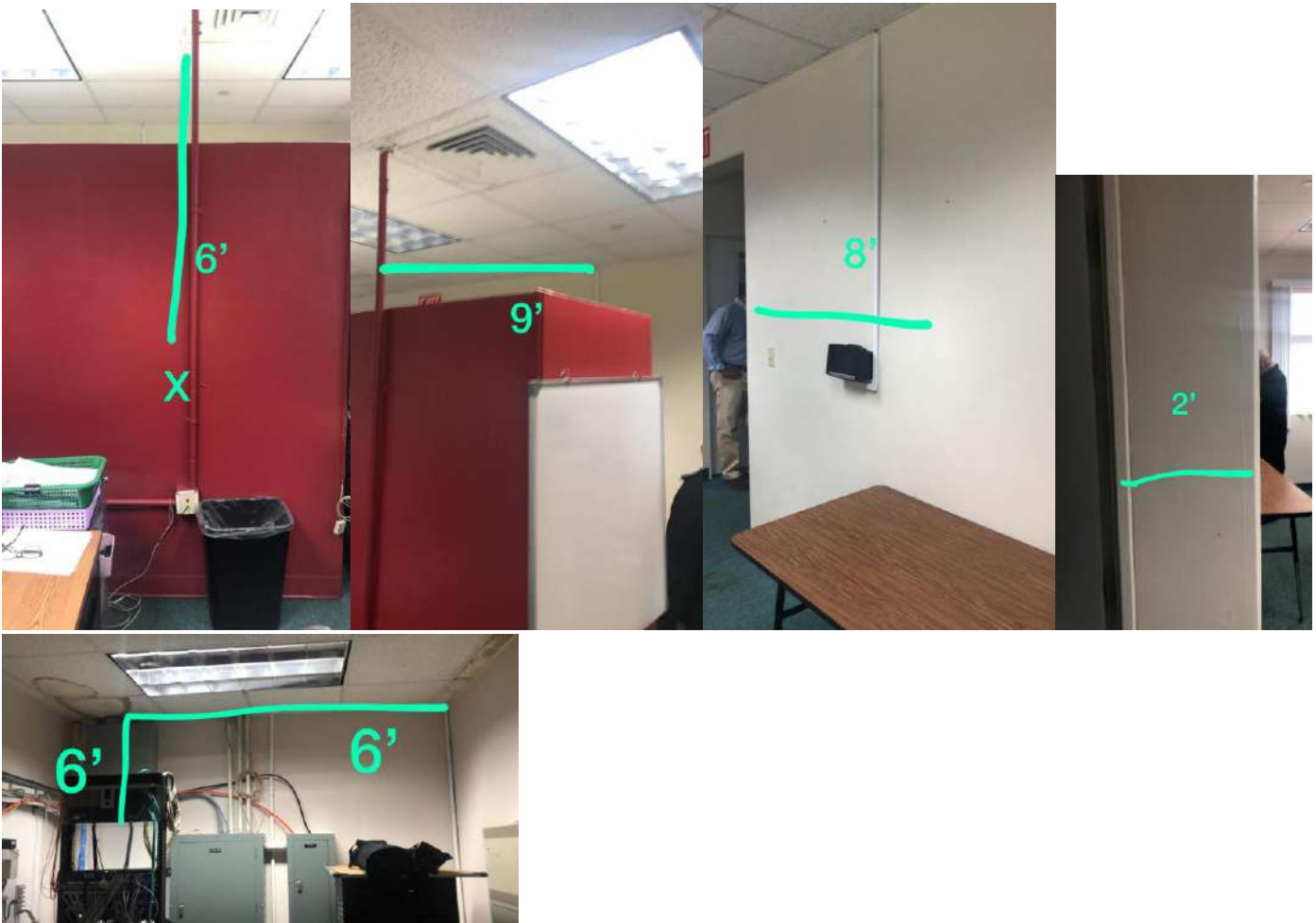
Installation materials: 1. (Power A/C) 18AWG, 3-conductor cable (10ft.)

Wiremold double-gang surface mount box (1ea.)

2. CAT5e Internet cable with RJ-45 connectors (37ft.)

3. Interior wire mouldings/coverings.(37ft.)

4. Rechargeable batteries (AA-6ea.)



TIYAN HIGH SCHOOL

1. **Project Location Address: 13-15 Mariner Avenue Barrigada, Guam 96913**
2. **Latitude-Longitude: 13°28'51"N 144°48'21"E**
3. **Recipient Summary of where it will be installed: Main office**
4. **Wall construction type : Concrete**
5. **Power source : Power over Ethernet (PoE)**

NOTE: When using PoE, the only required connection is the data/power cable from the PoE data equipment.

- Installation Materials :**
1. **Wiremold double-gang surface mount box (1ea.)**
 2. **CAT5e Internet cable with RJ-45 connectors (55 ft.)**
 3. **Interior wire mouldings/coverings.(55ft.)**
 4. **Rechargeable batteries (AA-6ea.)**



UMATAC MAYOR'S OFFICE

1. Project Location Address: Nino Perdido St. Umatac, Guam 96915
2. Latitude-Longitude: N/A
3. Recipient Summary of where it will be installed: Main office Area
4. Wall construction type : Concrete
5. Power : Unit will need to be powered by A/C Transformer.

Installation materials: 1. (Power A/C) 18AWG, 3-conductor cable (8ft.)

Wiremold double-gang surface mount box (1ea.)

2. CAT5e Internet cable with RJ-45 connectors (30ft.)

3. Interior wire mouldings/coverings.(30ft.)

4. Rechargeable batteries (AA-6ea.)

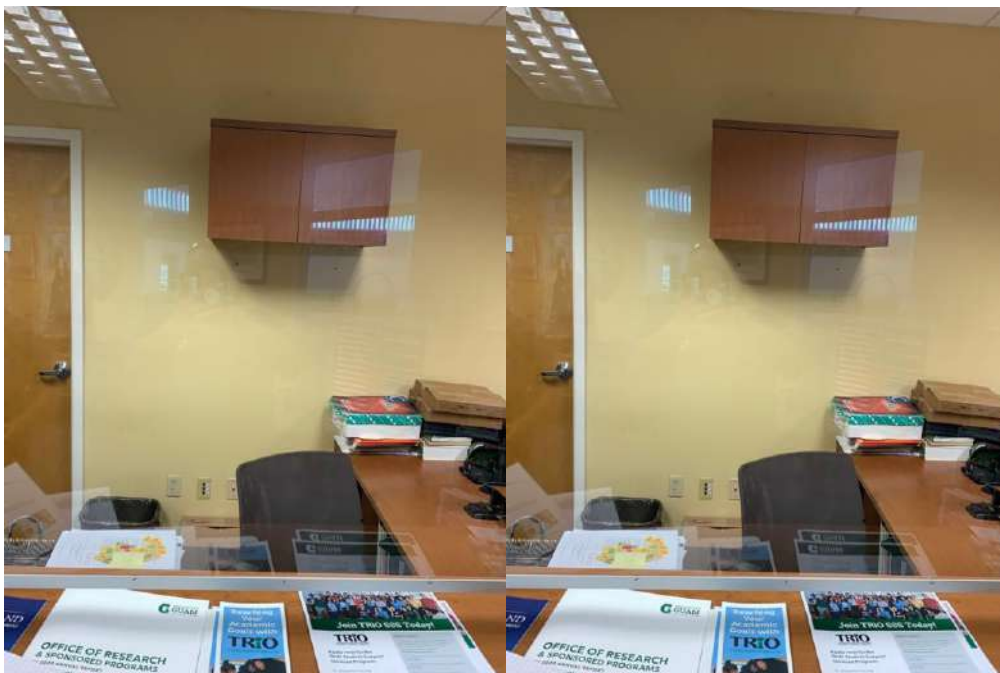


UNIVERSITY OF GUAM

1. **Project Location Address:** University Dr. Mangilao, Guam 96923, President's Office
2. **Recipient Summary of where it will be installed:** President's office Area
3. **Wall construction type :** Concrete
4. **Power source :** Power over Ethernet (PoE)

NOTE: When using PoE, the only required connection is the data/power cable from the PoE data equipment.

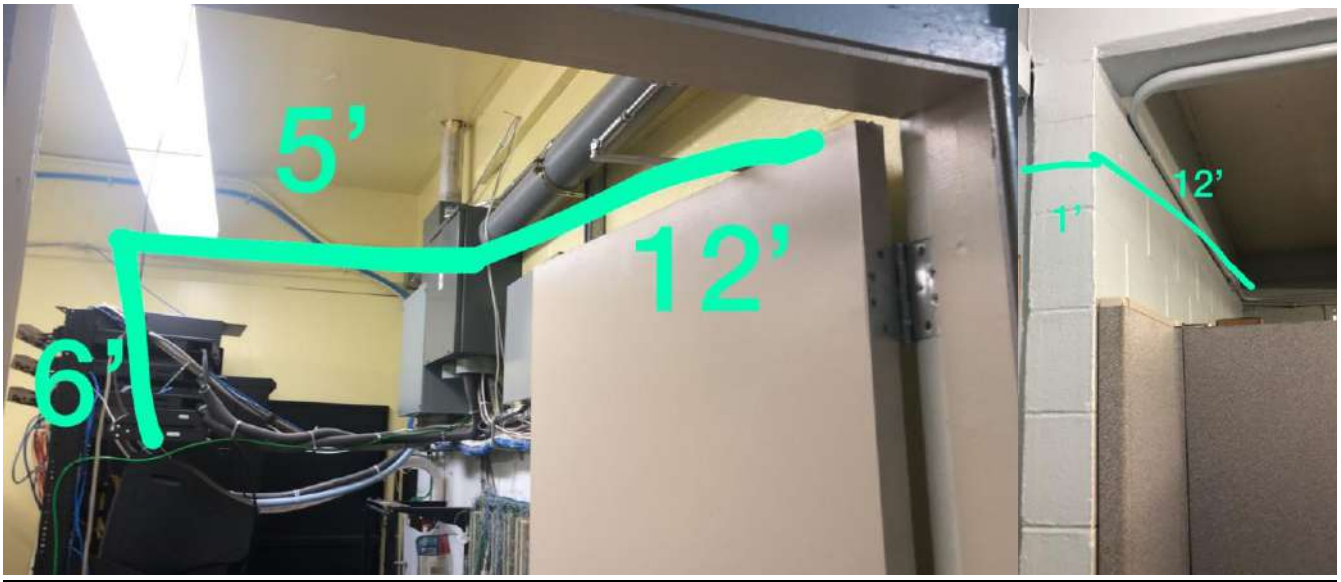
- Installation Materials :**
1. Wiremold double-gang surface mount box (1ea.)
 2. CAT5e Internet cable with RJ-45 connectors (10 ft.)
 3. Interior wire mouldings/coverings.(10ft.)
 4. Rechargeable batteries (AA-6ea.)



VICENTE BENAVENTE MIDDLE SCHOOL

1. Project Location Address: 288 W. Santa Monica Ave Dededo GU 96929
2. Location to be Installed : Main Office Area
3. Wall type : Concrete
4. Power : Unit will need to be powered by A/C Transformer.

Installation materials: 1. (Power A/C) 18AWG, 3-conductor cable (30ft.)



YONA MAYOR'S OFFICE

1. **Project Location Address:** Yona , Guam 96915
2. **Latitude-Longitude:** 13.40998, 144.77502
3. **Location to be Installed :** Main Office Area
4. **Wall type :** Concrete
5. **Power :** Unit will need to be powered by A/C Transformer.

Installation materials: 1. (Power A/C) 18AWG, 3-conductor cable (30ft.)

Wiremold double-gang surface mount box (1ea.)

2. CAT5e Internet cable with RJ-45 connectors (30ft.)

3. Interior wire mouldings/coverings.(30ft.)

4. Rechargeable batteries (AA-6ea.)

